

## Topo IIIBeta-1 Polyclonal Antibody

### Description

<b>Product type</b>	Primary Antibody
<b>Code</b>	BT-AP09129
<b>Host</b>	Rabbit
<b>Isotype</b>	IgG
<b>Size</b>	20ul, 50ul, 100ul
<b>Immunogen</b>	The antiserum was produced against synthesized peptide derived from human TOP3B. AA range:51-100
<b>Mol wt</b>	96662
<b>Species reactivity</b>	Human, Mouse
<b>Clonality</b>	Polyclonal
<b>Recommended application</b>	WB, IHC-p, ELISA
<b>Concentration</b>	1 mg/ml
<b>Full name</b>	Topo IIIBeta-1 Antibody
<b>Synonyms</b>	TOP3B; TOP3B1; DNA topoisomerase 3-beta-1; DNA topoisomerase III beta-1

**This product is for research use only, not for use in human, therapeutic or diagnostic procedure.**

### Background

TOP3B encodes a DNA topoisomerase, an enzyme that controls and alters the topologic states of DNA during transcription. This enzyme catalyzes the transient breaking and rejoining of a single strand of DNA which allows the strands to pass through one another, thus relaxing the supercoils and altering the topology of DNA. The enzyme interacts with DNA helicase SGS1 and plays a role in DNA recombination, cellular aging and maintenance of genome stability. Low expression of this gene may be related to higher survival rates in breast cancer patients. This gene has a pseudogene on chromosome 22. Alternate splicing results in multiple transcript variants. Additional alternatively spliced transcript variants of this gene have been described, but their full-length nature is not known.

### Recommended Dilution

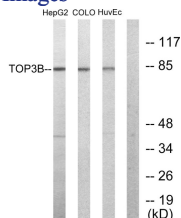
WB: 1: 500 - 1: 2000

IHC: 1: 100 - 1: 300

ELISA: 1: 20000

Not yet tested in other applications.

### Images



Western blot analysis of lysates from HepG2, COLO205, and HUVEC cells, using TOP3B Antibody. The lane on the right is blocked with the synthesized peptide.



Western Blot analysis of various cells using Topo IIIβ-1 Polyclonal Antibody. Secondary antibody was diluted at 1:20000 cells nucleus.

## Storage

-20°C for one year

501 Changsheng S Rd, Nanhu Dist, Jiaxing, Zhejiang, China

Tel: 86 21 31007137 | E-mail: [save@bt-laboratory.com](mailto:save@bt-laboratory.com) | [www.bt-laboratory.com](http://www.bt-laboratory.com)