

## Topo II Alpha Polyclonal Antibody

### Description

<b>Product type</b>	Primary Antibody
<b>Code</b>	BT-AP09133
<b>Host</b>	Rabbit
<b>Isotype</b>	IgG
<b>Size</b>	20ul, 50ul, 100ul
<b>Immunogen</b>	The antiserum was produced against synthesized peptide derived from human TOP2A. AA range:1-50
<b>Mol wt</b>	174385
<b>Species reactivity</b>	Human, Monkey
<b>Clonality</b>	Polyclonal
<b>Recommended application</b>	WB, IHC-p, IF, ELISA
<b>Concentration</b>	1 mg/ml
<b>Full name</b>	Topo IIalpha Antibody
<b>Synonyms</b>	TOP2A; TOP2; DNA topoisomerase 2-alpha; DNA topoisomerase II; alpha isozyme

**This product is for research use only, not for use in human, therapeutic or diagnostic procedure.**

### Background

TOP2A encodes a DNA topoisomerase, an enzyme that controls and alters the topologic states of DNA during transcription. This nuclear enzyme is involved in processes such as chromosome condensation, chromatid separation, and the relief of torsional stress that occurs during DNA transcription and replication. It catalyzes the transient breaking and rejoining of two strands of duplex DNA which allows the strands to pass through one another, thus altering the topology of DNA. Two forms of this enzyme exist as likely products of a gene duplication event. The gene encoding this form, alpha, is localized to chromosome 17 and the beta gene is localized to chromosome 3. The gene encoding this enzyme functions as the target for several anticancer agents and a variety of mutations in this gene have been associated with the development of drug resistance. Reduced activity of this enzyme may also play a role in ataxia-telangiectasia.

### Recommended Dilution

WB: 1: 500 - 1: 2000

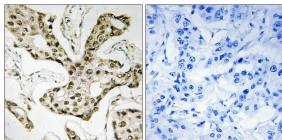
IHC: 1: 100 - 1: 300

IF: 1: 200 - 1: 1000

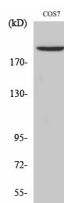
ELISA: 1: 20000

Not yet tested in other applications.

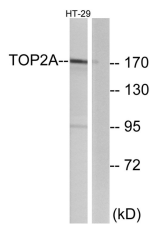
### Images



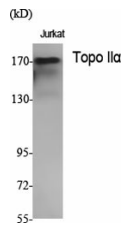
Immunohistochemistry analysis of paraffin-embedded human liver carcinoma tissue, using TOP2A Antibody. The picture on the right is blocked with the synthesized peptide.



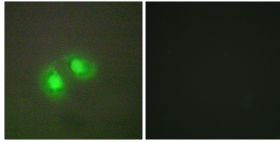
Western Blot analysis of 293 cells using Topo II $\alpha$  Polyclonal Antibody diluted at 1:1000. Secondary antibody was diluted at 1:20000



Western blot analysis of lysates from HT-29 cells, using TOP2A Antibody. The lane on the right is blocked with the synthesized peptide.



Western Blot analysis of various cells using Topo II $\alpha$  Polyclonal Antibody diluted at 1:1000. Secondary antibody was diluted at 1:20000



Immunofluorescence analysis of A549 cells, using TOP2A Antibody. The picture on the right is blocked with the synthesized peptide.

### Storage

-20°C for one year

501 Changsheng S Rd, Nanhu Dist, Jiaxing, Zhejiang, China

Tel: 86 21 31007137 | E-mail: [save@bt-laboratory.com](mailto:save@bt-laboratory.com) | [www.bt-laboratory.com](http://www.bt-laboratory.com)