

TP53INP2 Polyclonal Antibody

Description

Product type	Primary Antibody
Code	BT-AP09143
Host	Rabbit
Isotype	IgG
Size	20ul, 50ul, 100ul
Immunogen	The antiserum was produced against synthesized peptide derived from the C-terminal region of human TP53INP2. AA range:161-210
Mol wt	23980
Species reactivity	Human
Clonality	Polyclonal
Recommended application	WB, IHC-p, ELISA
Concentration	1 mg/ml
Full name	TP53INP2 Antibody
Synonyms	TP53INP2; C20orf110; DOR; PINH; Tumor protein p53-inducible nuclear protein 2; Diabetes and obesity-regulated gene; p53-inducible protein U; PIG-U

This product is for research use only, not for use in human, therapeutic or diagnostic procedure.

Background

The protein encoded by TP53INP2 (tumor protein p53 inducible nuclear protein 2) promotes autophagy and is essential for proper autophagosome formation and processing. In addition, the encoded protein can enhance rDNA transcription by helping in the assembly of the POLR1/RNA polymerase I preinitiation complex. Finally, this protein serves as a transcriptional activator for some genes.

Recommended Dilution

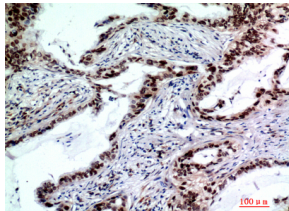
WB: 1: 500 - 1: 2000

IHC-p: 1: 100 - 1: 300

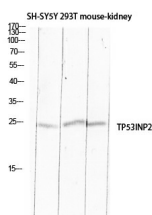
ELISA: 1: 10000

Not yet tested in other applications.

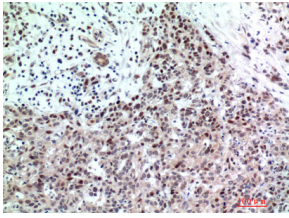
Images



Immunohistochemical analysis of paraffin-embedded human-lungcancer, antibody was diluted at 1:200



Western blot analysis of SH-SY5Y 293T mouse-kidney lysis using TP53INP2 antibody. Antibody was diluted at 1:500. Secondary antibody was diluted at 1:20000 cells nucleus.



Immunohistochemical analysis of paraffin-embedded human-breast-cancer, antibody was diluted at 1:200

Storage

-20°C for one year

501 Changsheng S Rd, Nanhu Dist, Jiaxing, Zhejiang, China

Tel: 86 21 31007137 | E-mail: save@bt-laboratory.com | www.bt-laboratory.com