

tPA Polyclonal Antibody

Description

Product type	Primary Antibody
Code	BT-AP09145
Host	Rabbit
Isotype	IgG
Size	20ul, 50ul, 100ul
Immunogen	The antiserum was produced against synthesized peptide derived from human tPA. AA range:38-87
Mol wt	62917/32175
Species reactivity	Human, Mouse, Rat
Clonality	Polyclonal
Recommended application	WB, ELISA
Concentration	1 mg/ml
Full name	tPA Antibody
Synonyms	PLAT; Tissue-type plasminogen activator; t-PA; t-plasminogen activator; tPA; Alteplase; Reteplase

This product is for research use only, not for use in human, therapeutic or diagnostic procedure.

Background

PLAT (plasminogen activator, tissue type) encodes tissue-type plasminogen activator, a secreted serine protease that converts the proenzyme plasminogen to plasmin, a fibrinolytic enzyme. The encoded preproprotein is proteolytically processed by plasmin or trypsin to generate heavy and light chains. These chains associate via disulfide linkages to form the heterodimeric enzyme. This enzyme plays a role in cell migration and tissue remodeling. Increased enzymatic activity causes hyperfibrinolysis, which manifests as excessive bleeding, while decreased activity leads to hypofibrinolysis, which can result in thrombosis or embolism. Alternative splicing of PLAT results in multiple transcript variants, at least one of which encodes an isoform that is proteolytically processed.

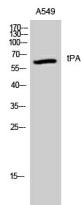
Recommended Dilution

WB: 1: 500 - 1: 2000

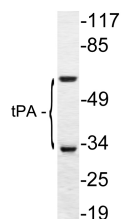
ELISA: 1: 10000

Not yet tested in other applications.

Images



Western Blot analysis of A549 cells using tPA Polyclonal Antibody. Secondary antibody was diluted at 1:20000



Western blot analysis of lysate from A549 cells, using tPA antibody.

Storage

-20°C for one year

501 Changsheng S Rd, Nanhu Dist, Jiaxing, Zhejiang, China

Tel: 86 21 31007137 | E-mail: save@bt-laboratory.com | www.bt-laboratory.com