

FH Polyclonal Antibody

Description

Product type	Primary Antibody
Code	BT-AP09147
Host	Rabbit
Isotype	IgG
Size	20ul, 50ul, 100ul
Immunogen	Recombinant Protein of Fumarate hydratase, mitochondrial
Mol wt	N/A
Species reactivity	Human, Mouse, Rat
Clonality	Polyclonal
Recommended application	WB

Concentration

Full name	Fumarate hydratase, mitochondrial
Synonyms	Fumarate hydratase, mitochondrial; Fumarate hydratase, mitochondrial; Fumarase; EC 4.2.1.2

This product is for research use only, not for use in human, therapeutic or diagnostic procedure.

Background

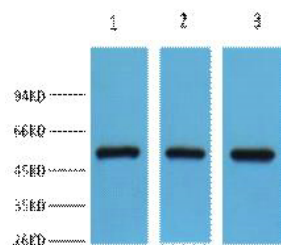
The protein encoded by this gene is an enzymatic component of the tricarboxylic acid (TCA) cycle, or Krebs cycle, and catalyzes the formation of L-malate from fumarate. It exists in both a cytosolic form and an N-terminal extended form, differing only in the translation start site used. The N-terminal extended form is targeted to the mitochondrion, where the removal of the extension generates the same form as in the cytoplasm. It is similar to some thermostable class II fumarases and functions as a homotetramer. Mutations in this gene can cause fumarase deficiency and lead to progressive encephalopathy.

Recommended Dilution

WB: 1: 1000

Not yet tested in other applications.

Images



Western blot analysis of 1) HeLa, 2) Mouse Brain, 3) HepG2, diluted at 1:2000. Secondary antibody was diluted at 1:20000

Storage

-20°C for 1 year