

TPD52 Polyclonal Antibody

Description

Product type	Primary Antibody
Code	BT-AP09148
Host	Rabbit
Isotype	IgG
Size	20ul, 50ul, 100ul
Immunogen	The antiserum was produced against synthesized peptide derived from human TPD52. AA range:41-90
Mol wt	19863
Species reactivity	Human, Mouse
Clonality	Polyclonal
Recommended application	IHC-p, ELISA
Concentration	1 mg/ml
Full name	TPD52 Antibody
Synonyms	TPD52; Tumor protein D52; Protein N8

This product is for research use only, not for use in human, therapeutic or diagnostic procedure.

Background

The tumor protein D52 (TPD52) family consists of three members, TPD52, TPD52L1 (D53), and TPD52L2 (D54). These small coiled-coil motif bearing proteins interact in hetero- and homomeric fashion. The TPD52 gene maps to chromosome 8q21, and due to amplification, shows frequent overexpression in prostate and breast carcinomas. TPD52 bound to annexin V1 in a Ca²⁺-dependent manner, suggesting that these molecules may act in concert to regulate secretory processes in plasma cells.

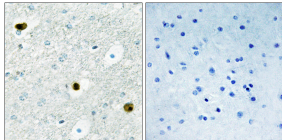
Recommended Dilution

IHC: 1: 100 - 1: 300

ELISA: 1: 40000

Not yet tested in other applications.

Images



Immunohistochemistry analysis of paraffin-embedded human brain tissue, using TPD52 Antibody. The picture on the right is blocked with the synthesized peptide.

Storage

-20°C for one year