

TPH2 Polyclonal Antibody

Description

Product type	Primary Antibody
Code	BT-AP09152
Host	Rabbit
Isotype	IgG
Size	20ul, 50ul, 100ul
Immunogen	The antiserum was produced against synthesized peptide derived from human TPH2. AA range:4-53
Mol wt	56057
Species reactivity	Human, Mouse, Rat, Monkey
Clonality	Polyclonal
Recommended application	WB, ELISA
Concentration	1 mg/ml
Full name	TPH2 Antibody
Synonyms	TPH2; NTPH; Tryptophan 5-hydroxylase 2; Neuronal tryptophan hydroxylase; Tryptophan 5-monoxygenase 2

This product is for research use only, not for use in human, therapeutic or diagnostic procedure.

Background

TPH2 encodes a member of the pterin-dependent aromatic acid hydroxylase family. The tryptophan hydroxylase 2 catalyzes the first and rate limiting step in the biosynthesis of serotonin, an important hormone and neurotransmitter. Mutations in this gene may be associated with psychiatric diseases such as bipolar affective disorder and major depression.

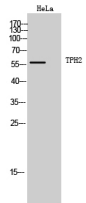
Recommended Dilution

WB: 1: 500 - 1: 2000

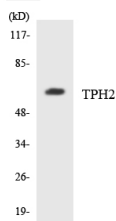
ELISA: 1: 40000

Not yet tested in other applications.

Images



Western Blot analysis of HeLa cells using TPH2 Polyclonal Antibody. Secondary antibody was diluted at 1:20000



Western blot analysis of the lysates from HUVEC cells using TPH2 antibody.

Storage

-20°C for one year

501 Changsheng S Rd, Nanhu Dist, Jiaxing, Zhejiang, China

Tel: 86 21 31007137 | E-mail: save@bt-laboratory.com | www.bt-laboratory.com