

## Fibronectin Polyclonal Antibody

### Description

<b>Product type</b>	Primary Antibody
<b>Code</b>	BT-AP09156
<b>Host</b>	Rabbit
<b>Isotype</b>	IgG
<b>Size</b>	20ul, 50ul, 100ul
<b>Immunogen</b>	Synthetic peptide from human protein at AA range: 2304-2375
<b>Mol wt</b>	N/A
<b>Species reactivity</b>	Human, Rat, Mouse
<b>Clonality</b>	Polyclonal
<b>Recommended application</b>	IHC-p, IF, ELISA
<b>Concentration</b>	1 mg/ml
<b>Full name</b>	Fibronectin
<b>Synonyms</b>	Fibronectin; Fibronectin; FN; Cold-insoluble globulin; CIG; Anastellin; Ugl-Y1; Ugl-Y2; Ugl-Y3;

**This product is for research use only, not for use in human, therapeutic or diagnostic procedure.**

### Background

This gene encodes fibronectin, a glycoprotein present in a soluble dimeric form in plasma, and in a dimeric or multimeric form at the cell surface and in extracellular matrix. The encoded preproprotein is proteolytically processed to generate the mature protein. Fibronectin is involved in cell adhesion and migration processes including embryogenesis, wound healing, blood coagulation, host defense, and metastasis. The gene has three regions subject to alternative splicing, with the potential to produce 20 different transcript variants, at least one of which encodes an isoform that undergoes proteolytic processing. The full-length nature of some variants has not been determined.

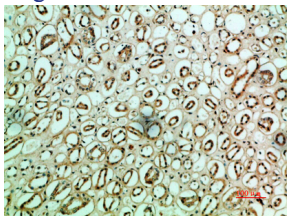
### Recommended Dilution

IHC-p: 1: 50 - 1: 200

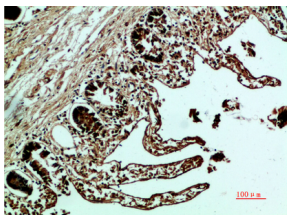
ELISA: 1: 10000 - 1: 20000

Not yet tested in other applications.

### Images



Immunohistochemical analysis of paraffin-embedded human-colon, antibody was diluted at 1:200



Immunohistochemical analysis of paraffin-embedded human-kidney, antibody was diluted at 1:200

## Storage

-20°C for 1 year

501 Changsheng S Rd, Nanhu Dist, Jiaxing, Zhejiang, China

Tel: 86 21 31007137 | E-mail: [save@bt-laboratory.com](mailto:save@bt-laboratory.com) | [www.bt-laboratory.com](http://www.bt-laboratory.com)