

TRAAK Polyclonal Antibody

Description

Product type	Primary Antibody
Code	BT-AP09164
Host	Rabbit
Isotype	IgG
Size	20ul, 50ul, 100ul
Immunogen	The antiserum was produced against synthesized peptide derived from human KCNK4. AA range:332-381
Mol wt	42704
Species reactivity	Human, Mouse
Clonality	Polyclonal
Recommended application	WB, ELISA
Concentration	1 mg/ml
Full name	TRAAK Antibody
Synonyms	KCNK4; TRAAK; Potassium channel subfamily K member 4; TWIK-related arachidonic acid-stimulated potassium channel protein; TRAAK; Two pore potassium channel KT4.1; Two pore K(+) channel KT4.1

This product is for research use only, not for use in human, therapeutic or diagnostic procedure.

Background

KCNK4 encodes a member of the TWIK-related arachidonic acid-stimulated two pore potassium channel subfamily. The potassium channel subfamily K member 4 homodimerizes and functions as an outwardly rectifying channel. This channel is regulated by polyunsaturated fatty acids, temperature and mechanical deformation of the lipid membrane. Potassium channel subfamily K member 4 is expressed primarily in neural tissues and may be involved in regulating the noxious input threshold in dorsal root ganglia neurons. Alternate splicing results in multiple transcript variants. Naturally occurring read-through transcripts also exist between this gene and the downstream testis expressed 40 (TEX40) gene, as represented in GeneID: 106780802.

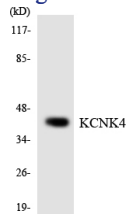
Recommended Dilution

WB: 1: 500 - 1: 2000

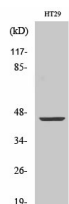
ELISA: 1: 40000

Not yet tested in other applications.

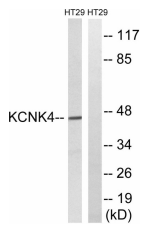
Images



Western blot analysis of the lysates from HUVEC cells using KCNK4 antibody.



Western Blot analysis of various cells using TRAAK Polyclonal Antibody. Secondary antibody was diluted at 1:20000



Western blot analysis of lysates from HT-29 cells, using KCNK4 Antibody. The lane on the right is blocked with the synthesized peptide.

Storage

-20°C for one year

501 Changsheng S Rd, Nanhu Dist, Jiaxing, Zhejiang, China

Tel: 86 21 31007137 | E-mail: save@bt-laboratory.com | www.bt-laboratory.com