

TRADD Polyclonal Antibody

Description

Product type	Primary Antibody
Code	BT-AP09166
Host	Rabbit
Isotype	IgG
Size	20ul, 50ul, 100ul
Immunogen	The antiserum was produced against synthesized peptide derived from human TRADD. AA range:251-300
Mol wt	34247
Species reactivity	Human, Mouse, Monkey
Clonality	Polyclonal
Recommended application	WB, IHC-p, ELISA
Concentration	1 mg/ml
Full name	TRADD Antibody
Synonyms	TRADD; Tumor necrosis factor receptor type 1-associated DEATH domain protein; TNFR1-associated DEATH domain protein; TNFRSF1A-associated via death domain

This product is for research use only, not for use in human, therapeutic or diagnostic procedure.

Background

Tumor necrosis factor receptor type 1-associated DEATH domain protein encoded by TRADD is a death domain containing adaptor molecule that interacts with TNFRSF1A/TNFR1 and mediates programmed cell death signaling and NF-kappaB activation. Tumor necrosis factor receptor type 1-associated DEATH domain protein binds adaptor protein TRAF2, reduces the recruitment of inhibitor-of-apoptosis proteins (IAPs) by TRAF2, and thus suppresses TRAF2 mediated apoptosis. This protein can also interact with receptor TNFRSF6/FAS and adaptor protein FADD/MORT1, and is involved in the Fas-induced cell death pathway.

Recommended Dilution

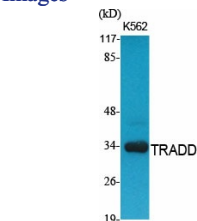
WB: 1: 500 - 1: 2000

IHC: 1: 100 - 1: 300

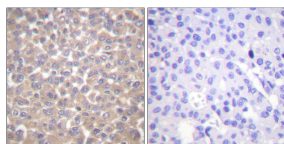
ELISA: 1: 10000

Not yet tested in other applications.

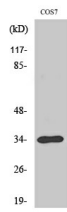
Images



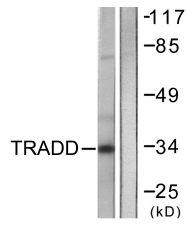
Western Blot analysis of various cells using TRADD Polyclonal Antibody. Secondary antibody was diluted at 1:20000



Immunohistochemistry analysis of paraffin-embedded human breast carcinoma tissue, using TRADD Antibody. The picture on the right is blocked with the synthesized peptide.



Western Blot analysis of COS7 cells using TRADD Polyclonal Antibody. Secondary antibody was diluted at 1:20000



Western blot analysis of lysates from COS7 cells, using TRADD Antibody. The lane on the right is blocked with the synthesized peptide.

Storage

-20°C for one year

501 Changsheng S Rd, Nanhu Dist, Jiaxing, Zhejiang, China

Tel: 86 21 31007137 | E-mail: save@bt-laboratory.com | www.bt-laboratory.com