

## TRAF4 Polyclonal Antibody

### Description

<b>Product type</b>	Primary Antibody
<b>Code</b>	BT-AP09170
<b>Host</b>	Rabbit
<b>Isotype</b>	IgG
<b>Size</b>	20ul, 50ul, 100ul
<b>Immunogen</b>	The antiserum was produced against synthesized peptide derived from human TRAF4. AA range:261-310
<b>Mol wt</b>	53543
<b>Species reactivity</b>	Human, Mouse, Rat
<b>Clonality</b>	Polyclonal
<b>Recommended application</b>	WB, ELISA
<b>Concentration</b>	1 mg/ml
<b>Full name</b>	TRAF4 Antibody
<b>Synonyms</b>	TRAF4; CART1; MLN62; RNF83; TNF receptor-associated factor 4; Cysteine-rich domain associated with RING and Traf domains protein 1; Metastatic lymph node gene 62 protein; MLN 62; RING finger protein 8

This product is for research use only, not for use in human, therapeutic or diagnostic procedure.

### Background

TRAF4 (TNF receptor associated factor 4) encodes a member of the TNF receptor associated factor (TRAF) family. TRAF proteins are associated with, and mediate signal transduction from members of the TNF receptor superfamily. The encoded protein has been shown to interact with neurotrophin receptor, p75 (NTR/NTSR1), and negatively regulate NTR induced cell death and NF-kappa B activation. This protein has been found to bind to p47phox, a cytosolic regulatory factor included in a multi-protein complex known as NAD(P)H oxidase. This protein thus, is thought to be involved in the oxidative activation of MAPK8/JNK. Alternatively spliced transcript variants have been observed but the full-length nature of only one has been determined.

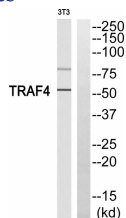
### Recommended Dilution

WB: 1: 500 - 1: 2000

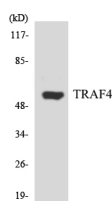
ELISA: 1: 10000

Not yet tested in other applications.

### Images



Western blot analysis of TRAF4 Antibody. The lane on the right is blocked with the TRAF4 peptide.



Western blot analysis of the lysates from K562 cells using TRAF4 antibody.

## Storage

-20°C for one year

501 Changsheng S Rd, Nanhu Dist, Jiaxing, Zhejiang, China

Tel: 86 21 31007137 | E-mail: [save@bt-laboratory.com](mailto:save@bt-laboratory.com) | [www.bt-laboratory.com](http://www.bt-laboratory.com)