

## FKBP8 Polyclonal Antibody

### Description

|                         |   |
|-------------------------|---|
| Product type            | Primary Antibody  |
| Code                    | BT-AP09172  |
| Host                    | Rabbit  |
| Isotype                 | IgG   |
| Size                    | 20ul, 50ul, 100ul   |
| Immunogen               | Synthesized peptide derived from part region of human protein   |
| Mol wt                  | N/A   |
| Species reactivity      | Human, Mouse, Rat   |
| Clonality               | Polyclonal  |
| Recommended application | WB, ELISA   |
| Concentration           | 1 mg/ml   |
| Full name               | Peptidyl-prolyl cis-trans isomerase FKBP8   |
| Synonyms                | Peptidyl-prolyl cis-trans isomerase FKBP8 ;PPIase FKBP8;EC 5.2.1.8;38 kDa FK506-binding protein;38 kDa FKBP;FKBP-38;hFKBP38;FK506-binding protein 8;FKBP-8;FKBPR38;Rotamase |

This product is for research use only, not for use in human, therapeutic or diagnostic procedure.

### Background

The protein encoded by this gene is a member of the immunophilin protein family, which play a role in immunoregulation and basic cellular processes involving protein folding and trafficking. Unlike the other members of the family, this encoded protein does not seem to have PPIase/rotamase activity. It may have a role in neurons associated with memory function.

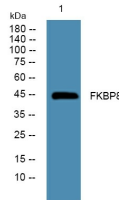
### Recommended Dilution

WB: 1: 500 - 1: 2000

ELISA: 1: 5000 - 1: 20000

Not yet tested in other applications.

### Images



Western blot analysis of lysates from KB cells, primary antibody was diluted at 1:1000, 4°C overnight

### Storage

-20°C for 1 year