

## TRAP100 Polyclonal Antibody

### Description

<b>Product type</b>	Primary Antibody
<b>Code</b>	BT-AP09178
<b>Host</b>	Rabbit
<b>Isotype</b>	IgG
<b>Size</b>	20ul, 50ul, 100ul
<b>Immunogen</b>	The antiserum was produced against synthesized peptide derived from human MED24. AA range:801-850
<b>Mol wt</b>	110305
<b>Species reactivity</b>	Human, Mouse, Rat
<b>Clonality</b>	Polyclonal
<b>Recommended application</b>	WB, IHC-p, IF, ELISA
<b>Concentration</b>	1 mg/ml
<b>Full name</b>	TRAP100 Antibody
<b>Synonyms</b>	MED24; ARC100; CRSP4; DRIP100; KIAA0130; THRAP4; TRAP100; Mediator of RNA polymerase II transcription subunit 24; Activator-recruited cofactor 100 kDa component; ARC100; Cofactor required for Sp1 tran

**This product is for research use only, not for use in human, therapeutic or diagnostic procedure.**

### Background

MED24 encodes a component of the mediator complex (also known as TRAP, SMCC, DRIP, or ARC), a transcriptional coactivator complex thought to be required for the expression of almost all genes. The mediator complex is recruited by transcriptional activators or nuclear receptors to induce gene expression, possibly by interacting with RNA polymerase II and promoting the formation of a transcriptional pre-initiation complex. Multiple transcript variants encoding different isoforms have been found for this gene.

### Recommended Dilution

WB: 1: 500 - 1: 2000

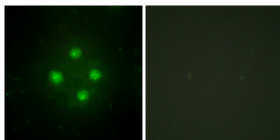
IHC: 1: 100 - 1: 300

IF: 1: 200 - 1: 1000

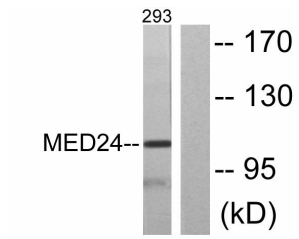
ELISA: 1: 20000

Not yet tested in other applications.

### Images



Immunofluorescence analysis of HUVEC cells, using MED24 Antibody. The picture on the right is blocked with the synthesized peptide.



Western blot analysis of lysates from 293 cells, using MED24 Antibody. The lane on the right is blocked with the synthesized peptide.



Western Blot analysis of various cells using TRAP100 Polyclonal Antibody diluted at 1:1000. Secondary antibody was diluted at 1:20000 cells nucleus.

### Storage

-20°C for one year

501 Changsheng S Rd, Nanhu Dist, Jiaxing, Zhejiang, China

Tel: 86 21 31007137 | E-mail: [save@bt-laboratory.com](mailto:save@bt-laboratory.com) | [www.bt-laboratory.com](http://www.bt-laboratory.com)