

TRAP240 Polyclonal Antibody

Description

| | |
|-------------------------|--|
| Product type | Primary Antibody |
| Code | BT-AP09183 |
| Host | Rabbit |
| Isotype | IgG |
| Size | 20ul, 50ul, 100ul |
| Immunogen | The antiserum was produced against synthesized peptide derived from human MED13. AA range:681-730 |
| Mol wt | 239231 |
| Species reactivity | Human |
| Clonality | Polyclonal |
| Recommended application | IHC-p, ELISA |
| Concentration | 1 mg/ml |
| Full name | TRAP240 Antibody |
| Synonyms | MED13; ARC250; KIAA0593; THRAP1; TRAP240; Mediator of RNA polymerase II transcription subunit 13; Activator-recruited cofactor 250 kDa component; ARC250; Mediator complex subunit 13; Thyroid hormone r |

This product is for research use only, not for use in human, therapeutic or diagnostic procedure.

Background

MED13 (mediator complex subunit 13) encodes a component of the mediator complex (also known as TRAP, SMCC, DRIP, or ARC), a transcriptional coactivator complex thought to be required for the expression of almost all genes. The mediator complex is recruited by transcriptional activators or nuclear receptors to induce gene expression, possibly by interacting with RNA polymerase II and promoting the formation of a transcriptional pre-initiation complex. The product of MED13 is proposed to form a sub-complex with MED12, cyclin C, and CDK8 that can negatively regulate transactivation by mediator.

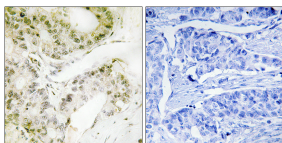
Recommended Dilution

IHC: 1: 100 - 1: 300

ELISA: 1: 40000

Not yet tested in other applications.

Images



Immunohistochemistry analysis of paraffin-embedded human lung carcinoma, using MED13 Antibody. The picture on the right is blocked with the synthesized peptide.

Storage

-20°C for one year