

TRAPPC6A Polyclonal Antibody

Description

Product type	Primary Antibody
Code	BT-AP09185
Host	Rabbit
Isotype	IgG
Size	20ul, 50ul, 100ul
Immunogen	The antiserum was produced against synthesized peptide derived from human TRAPPC6A. AA range:31-80
Mol wt	17605
Species reactivity	Human
Clonality	Polyclonal
Recommended application	IHC-p, ELISA
Concentration	1 mg/ml
Full name	TRAPPC6A Antibody
Synonyms	TRAPPC6A; HSPC289; Trafficking protein particle complex subunit 6A; TRAPP complex subunit 6A

This product is for research use only, not for use in human, therapeutic or diagnostic procedure.

Background

TRAPPC6A (trafficking protein particle complex 6A) encodes a component of the trafficking protein particle complex, which tethers transport vesicles to the cis-Golgi membrane. Loss of expression of the related gene in mouse affects coat and eye pigmentation, suggesting that the encoded protein may be involved in melanosome biogenesis. Alternatively spliced transcript variants encoding multiple isoforms have been observed for TRAPPC6A.

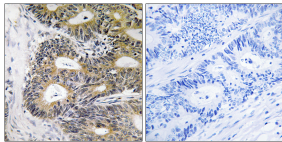
Recommended Dilution

IHC: 1: 100 - 1: 300

ELISA: 1: 40000

Not yet tested in other applications.

Images



Immunohistochemistry analysis of paraffin-embedded human colon carcinoma, using TRAPPC6A Antibody. The picture on the right is blocked with the synthesized peptide.

Storage

-20°C for one year