

## TReP-132 Polyclonal Antibody

### Description

<b>Product type</b>	Primary Antibody
<b>Code</b>	BT-AP09189
<b>Host</b>	Rabbit
<b>Isotype</b>	IgG
<b>Size</b>	20ul, 50ul, 100ul
<b>Immunogen</b>	The antiserum was produced against synthesized peptide derived from human TREF1. AA range:1071-1120
<b>Mol wt</b>	132256
<b>Species reactivity</b>	Human, Mouse
<b>Clonality</b>	Polyclonal
<b>Recommended application</b>	IHC-p, ELISA
<b>Concentration</b>	1 mg/ml
<b>Full name</b>	TReP-132 Antibody
<b>Synonyms</b>	TRERF1; BCAR2; RAPA; TREP132; Transcriptional-regulating factor 1; Breast cancer anti-estrogen resistance 2; Transcriptional-regulating protein 132; Zinc finger protein rapa; Zinc finger transcription

**This product is for research use only, not for use in human, therapeutic or diagnostic procedure.**

### Background

TRERF1 (transcriptional regulating factor 1) encodes a zinc-finger transcriptional regulating protein which interacts with CBP/p300 to regulate the human gene CYP11A1. Alternative splicing results in multiple transcript variants encoding different isoforms.

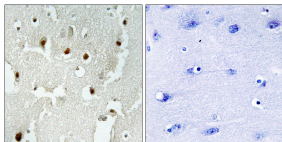
### Recommended Dilution

IHC: 1: 100 - 1: 300

ELISA: 1: 5000

Not yet tested in other applications.

### Images



Immunohistochemistry analysis of paraffin-embedded human brain tissue, using TREF1 Antibody. The picture on the right is blocked with the synthesized peptide.

### Storage

-20°C for one year

501 Changsheng S Rd, Nanhu Dist, Jiaxing, Zhejiang, China

Tel: 86 21 31007137 | E-mail: [save@bt-laboratory.com](mailto:save@bt-laboratory.com) | [www.bt-laboratory.com](http://www.bt-laboratory.com)