

TRH-R1 Polyclonal Antibody

Description

Product type	Primary Antibody
Code	BT-AP09192
Host	Rabbit
Isotype	IgG
Size	20ul, 50ul, 100ul
Immunogen	The antiserum was produced against synthesized peptide derived from human TRHR. AA range:195-244
Mol wt	45085
Species reactivity	Human, Mouse, Rat, Monkey
Clonality	Polyclonal
Recommended application	WB, IF, ELISA
Concentration	1 mg/ml
Full name	TRH-R1 Antibody
Synonyms	TRHR; Thyrotropin-releasing hormone receptor; TRH-R; Thyroliberin receptor

This product is for research use only, not for use in human, therapeutic or diagnostic procedure.

Background

TRHR (thyrotropin releasing hormone receptor) encodes a G protein-coupled receptor for thyrotropin-releasing hormone (TRH). Upon binding to TRH, this receptor activates the inositol phospholipid-calcium-protein kinase C transduction pathway. Mutations in TRHR have been associated with generalized thyrotropin-releasing hormone resistance.

Recommended Dilution

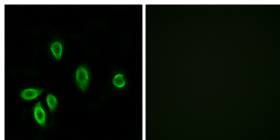
WB: 1: 500 - 1: 2000

IF: 1: 200 - 1: 1000

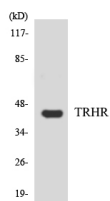
ELISA: 1: 20000

Not yet tested in other applications.

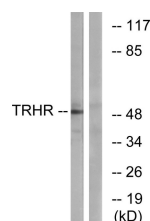
Images



Immunofluorescence analysis of A549 cells, using TRHR Antibody. The picture on the right is blocked with the synthesized peptide.



Western blot analysis of the lysates from HepG2 cells using TRHR antibody.



Western blot analysis of lysates from COS7 cells, using TRHR Antibody. The lane on the right is blocked with the synthesized peptide.

Storage

-20°C for one year

501 Changsheng S Rd, Nanhu Dist, Jiaxing, Zhejiang, China

Tel: 86 21 31007137 | E-mail: save@bt-laboratory.com | www.bt-laboratory.com