

DHX16 Rabbit Polyclonal Antibody

Description

Product type	Primary Antibody
Code	BT-AP09194
Host	Rabbit
Isotype	IgG
Size	20ul, 50ul, 100ul
Immunogen	Synthesized peptide derived from human DHX16
Mol wt	114510
Species reactivity	Human, Rat, Mouse
Clonality	Polyclonal
Recommended application	WB
Concentration	1 mg/ml
Full name	DHX16
Synonyms	DHX16

This product is for research use only, not for use in human, therapeutic or diagnostic procedure.

Background

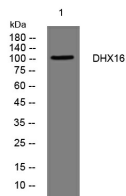
DEAD box proteins| characterized by the conserved motif Asp-Glu-Ala-Asp (DEAD)| are putative RNA helicases. They are implicated in a number of cellular processes involving alteration of RNA secondary structure such as translation initiation| nuclear and mitochondrial splicing| and ribosome and spliceosome assembly. Based on their distribution patterns| some members of this family are believed to be involved in embryogenesis| spermatogenesis| and cellular growth and division. This gene encodes a DEAD box protein| which is a functional homolog of fission yeast Prp8 protein involved in cell cycle progression. This gene is mapped to the MHC region on chromosome 6p21.3| a region where many malignant| genetic and autoimmune disease genes are linked. Two transcript variants encoding different isoforms have been found for this gene.

Recommended Dilution

WB: 1: 500 - 1: 2000

Not yet tested in other applications.

Images



Western blot analysis of lysates from HeLa cells, primary antibody was diluted at 1:1000, 4°C overnight

Storage

-20°C for 1 year