

## DHX32 Rabbit Polyclonal Antibody

### Description

|                                |  |
|--------------------------------|--|
| <b>Product type</b>            | Primary Antibody                             |
| <b>Code</b>                    | BT-AP09199                                   |
| <b>Host</b>                    | Rabbit                                       |
| <b>Isotype</b>                 | IgG  |
| <b>Size</b>                    | 20ul, 50ul, 100ul                            |
| <b>Immunogen</b>               | Synthesized peptide derived from human DHX32 |
| <b>Mol wt</b>                  | 81730  |
| <b>Species reactivity</b>      | Human, Mouse                                 |
| <b>Clonality</b>               | Polyclonal                                   |
| <b>Recommended application</b> | WB   |
| <b>Concentration</b>           | 1 mg/ml                                      |
| <b>Full name</b>               | DHX32  |
| <b>Synonyms</b>                | DHX32  |

This product is for research use only, not for use in human, therapeutic or diagnostic procedure.

### Background

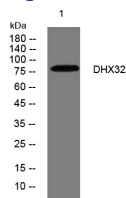
DEAD box proteins| characterized by the conserved motif Asp-Glu-Ala-Asp (DEAD)| are putative RNA helicases. They are implicated in a number of cellular processes involving alteration of RNA secondary structure such as translation initiation| nuclear and mitochondrial splicing| and ribosome and spliceosome assembly. Based on their distribution patterns| some members of this DEAD box protein family are believed to be involved in embryogenesis| spermatogenesis| and cellular growth and division. This gene encodes a member of this family. The function of this member has not been determined. Alternative splicing of this gene generates 2 transcript variants| but the full length nature of one of the variants has not been defined.

### Recommended Dilution

WB: 1: 500 - 1: 2000

Not yet tested in other applications.

### Images



Western blot analysis of lysates from 293T cells, primary antibody was diluted at 1:1000, 4°C overnight

### Storage

-20°C for 1 year