

## TRIM16 Polyclonal Antibody

### Description

Product type	Primary Antibody
Code	BT-AP09201
Host	Rabbit
Isotype	IgG
Size	20ul, 50ul, 100ul
Immunogen	The antiserum was produced against synthesized peptide derived from human TRIM16. AA range:31-80
Mol wt	63955
Species reactivity	Human
Clonality	Polyclonal
Recommended application	IHC-p, ELISA
Concentration	1 mg/ml
Full name	TRIM16 Antibody
Synonyms	TRIM16; EBBP; Tripartite motif-containing protein 16; Estrogen-responsive B box protein

**This product is for research use only, not for use in human, therapeutic or diagnostic procedure.**

### Background

TRIM16 was identified as an estrogen and anti-estrogen regulated gene in epithelial cells stably expressing estrogen receptor. The tripartite motif containing 16 encoded by this gene contains two B box domains and a coiled-coiled region that are characteristic of the B box zinc finger protein family. The proteins of this family have been reported to be involved in a variety of biological processes including cell growth, differentiation and pathogenesis. Expression of this gene was detected in most tissues. Its function, however, has not yet been determined.

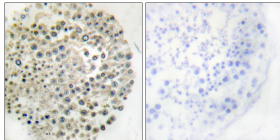
### Recommended Dilution

IHC: 1: 100 - 1: 300

ELISA: 1: 10000

Not yet tested in other applications.

### Images



Immunohistochemistry analysis of paraffin-embedded human testis, using TRIM16 Antibody. The picture on the right is blocked with the synthesized peptide.

### Storage

-20°C for one year

501 Changsheng S Rd, Nanhu Dist, Jiaxing, Zhejiang, China

Tel: 86 21 31007137 | E-mail: [save@bt-laboratory.com](mailto:save@bt-laboratory.com) | [www.bt-laboratory.com](http://www.bt-laboratory.com)