

TRIP13 Polyclonal Antibody

Description

Product type	Primary Antibody
Code	BT-AP09207
Host	Rabbit
Isotype	IgG
Size	20ul, 50ul, 100ul
Immunogen	The antiserum was produced against synthesized peptide derived from human TRIP13. AA range:383-432
Mol wt	48551
Species reactivity	Human, Mouse, Rat
Clonality	Polyclonal
Recommended application	WB, IHC-p, ELISA
Concentration	1 mg/ml
Full name	TRIP13 Antibody
Synonyms	TRIP13; PCH2; Pachytene checkpoint protein 2 homolog; Human papillomavirus type 16 E1 protein-binding protein; 16E1-BP; HPV16 E1 protein-binding protein; Thyroid hormone receptor interactor 13; Thyroi

This product is for research use only, not for use in human, therapeutic or diagnostic procedure.

Background

TRIP13 (thyroid hormone receptor interactor 13) encodes a protein that interacts with thyroid hormone receptors, also known as hormone-dependent transcription factors. The gene product interacts specifically with the ligand binding domain. TRIP13 is one of several that may play a role in early-stage non-small cell lung cancer.

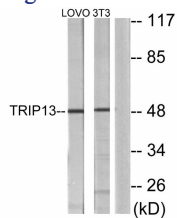
Recommended Dilution

WB: 1: 500 - 1: 2000

ELISA: 1: 10000

Not yet tested in other applications.

Images



Western blot analysis of lysates from LOVO and NIH/3T3 cells, using TRIP13 Antibody. The lane on the right is blocked with the synthesized peptide.

Storage

-20°C for one year