

DISC1 Rabbit Polyclonal Antibody

Description

Product type	Primary Antibody
Code	BT-AP09233
Host	Rabbit
Isotype	IgG
Size	20ul, 50ul, 100ul
Immunogen	Synthesized peptide derived from human DISC1
Mol wt	93940
Species reactivity	Human, Mouse, Rat
Clonality	Polyclonal
Recommended application	WB
Concentration	1 mg/ml
Full name	DISC1
Synonyms	DISC1

This product is for research use only, not for use in human, therapeutic or diagnostic procedure.

Background

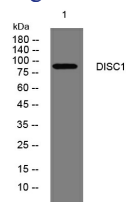
This gene encodes a protein with multiple coiled coil motifs which is located in the nucleus| cytoplasm and mitochondria. The protein is involved in neurite outgrowth and cortical development through its interaction with other proteins. This gene is disrupted in a t(1;11) (q42.1;q14.3) translocation which segregates with schizophrenia and related psychiatric disorders in a large Scottish family. Alternate transcriptional splice variants| encoding different isoforms| have been characterized.

Recommended Dilution

WB: 1: 500 - 1: 2000

Not yet tested in other applications.

Images



Western blot analysis of lysates from HCT116 cells, primary antibody was diluted at 1:1000, 4°C overnight

Storage

-20°C for 1 year