

TrxR2 Polyclonal Antibody

Description

Product type	Primary Antibody
Code	BT-AP09244
Host	Rabbit
Isotype	IgG
Size	20ul, 50ul, 100ul
Immunogen	The antiserum was produced against synthesized peptide derived from human TRXR2. AA range:471-520
Mol wt	56460
Species reactivity	Human, Mouse, Rat
Clonality	Polyclonal
Recommended application	WB, IHC-p, ELISA
Concentration	1 mg/ml
Full name	TrxR2 Antibody
Synonyms	TXNRD2; KIAA1652; TRXR2; Thioredoxin reductase 2; mitochondrial; Selenoprotein Z; SelZ; TR-beta; Thioredoxin reductase TR3

This product is for research use only, not for use in human, therapeutic or diagnostic procedure.

Background

TXNRD2 encodes a member of the class I pyridine nucleotide-disulfide oxidoreductase family. The thioredoxin reductase 2 mitochondrial is a selenocysteine-containing flavoenzyme that maintains thioredoxins in a reduced state, thereby playing a key role in regulating the cellular redox environment. Mammals have three related thioredoxin reductases. This gene encodes a mitochondrial form important for scavenging of reactive oxygen species in mitochondria. Alternatively spliced transcript variants encoding different isoforms have been described.

Recommended Dilution

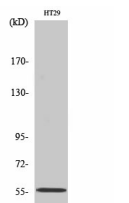
WB: 1: 500 - 1: 2000

IHC: 1: 100 - 1: 300

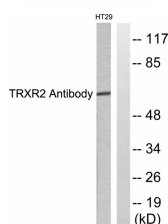
ELISA: 1: 10000

Not yet tested in other applications.

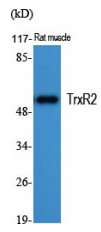
Images



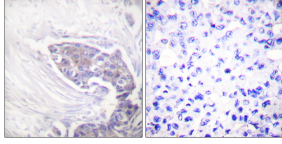
Western Blot analysis of HT29 cells using TrxR2 Polyclonal Antibody. Secondary antibody was diluted at 1:20000



Western blot analysis of lysates from HT29 cells, using TRXR2 Antibody. The lane on the right is blocked with the synthesized peptide.



Western Blot analysis of various cells using TrxR2 Polyclonal Antibody. Secondary antibody was diluted at 1:20000



Immunohistochemistry analysis of paraffin-embedded human breast carcinoma tissue, using TRXR2 Antibody. The picture on the right is blocked with the synthesized peptide.

Storage

-20°C for one year

501 Changsheng S Rd, Nanhu Dist, Jiaxing, Zhejiang, China

Tel: 86 21 31007137 | E-mail: save@bt-laboratory.com | www.bt-laboratory.com