

Tryptase-3 Polyclonal Antibody

Description

Product type	Primary Antibody
Code	BT-AP09251
Host	Rabbit
Isotype	IgG
Size	20ul, 50ul, 100ul
Immunogen	Synthesized peptide derived from Tryptase-3 at AA range: 51-100
Mol wt	26584
Species reactivity	Human
Clonality	Polyclonal
Recommended application	WB, ELISA
Concentration	1 mg/ml
Full name	Tryptase-3 Antibody
Synonyms	Tryptase delta (EC 3.4.21.59) (Delta-tryptase) (HmMCP-3-like tryptase III; Mast cell mMCP-7-like Tryptase-3

This product is for research use only, not for use in human, therapeutic or diagnostic procedure.

Background

Tryptases comprise a family of trypsin-like serine proteases, the peptidase family S1. Tryptases are enzymatically active only as heparin-stabilized tetramers, and they are resistant to all known endogenous proteinase inhibitors. Several tryptase genes are clustered on chromosome 16p13.3. These genes are characterized by several distinct features. They have a highly conserved 3' UTR and contain tandem repeat sequences at the 5' flank and 3' UTR which are thought to play a role in regulation of the mRNA stability. Although TPSD1 (tryptase delta 1) may be an exception, most of the tryptase genes have an intron immediately upstream of the initiator Met codon, which separates the site of transcription initiation from protein coding sequence. This feature is characteristic of tryptases but is unusual in other genes. Tryptases have been implicated as mediators in the pathogenesis of asthma and other allergic and inflammatory disorders. TPSD1 was once considered to be a pseudogene, although it is now believed to be a functional gene that encodes a protein.

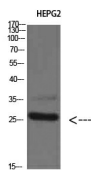
Recommended Dilution

WB: 1: 500 - 2000

ELISA: 1: 10000 - 20000

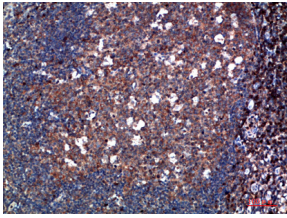
Not yet tested in other applications.

Images

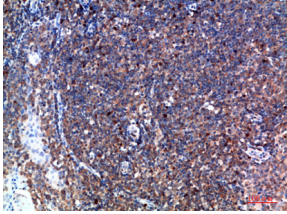


Western Blot analysis of HEPG2 cells using Tryptase-3 Polyclonal Antibody diluted at 1:800.

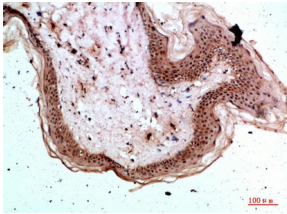
Secondary antibody was diluted at 1:20000



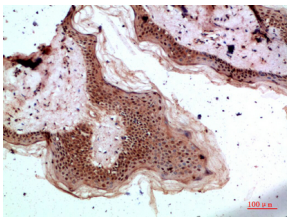
Immunohistochemical analysis of paraffin-embedded human-tonsil, antibody was diluted at 1:200



Immunohistochemical analysis of paraffin-embedded human-tonsil, antibody was diluted at 1:200



Immunohistochemical analysis of paraffin-embedded human-skin, antibody was diluted at 1:200



Immunohistochemical analysis of paraffin-embedded human-skin, antibody was diluted at 1:200

Storage

-20°C for one year

501 Changsheng S Rd, Nanhui Dist, Jiaying, Zhejiang, China

Tel: 86 21 31007137 | E-mail: save@bt-laboratory.com | www.bt-laboratory.com