

## TSA-1 Polyclonal Antibody

### Description

<b>Product type</b>	Primary Antibody
<b>Code</b>	BT-AP09256
<b>Host</b>	Rabbit
<b>Isotype</b>	IgG
<b>Size</b>	20ul, 50ul, 100ul
<b>Immunogen</b>	The antiserum was produced against synthesized peptide derived from human LY6E. AA range:17-66
<b>Mol wt</b>	13507
<b>Species reactivity</b>	Human
<b>Clonality</b>	Polyclonal
<b>Recommended application</b>	IF, ELISA
<b>Concentration</b>	1 mg/ml
<b>Full name</b>	TSA-1 Antibody
<b>Synonyms</b>	LY6E; 9804; RIGE; SCA2; TSA1; Lymphocyte antigen 6E; Ly-6E; Retinoic acid-induced gene E protein; RIG-E; Stem cell antigen 2; SCA-2; Thymic shared antigen 1; TSA-1

This product is for research use only, not for use in human, therapeutic or diagnostic procedure.

### Background

LY6E (Lymphocyte Antigen 6 Complex, Locus E) is a Protein Coding gene. Diseases associated with LY6E include leukemia, acute promyelocytic, somatic and subvalvular aortic stenosis.

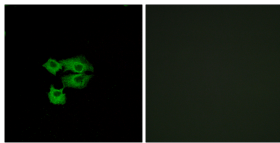
### Recommended Dilution

IF: 1: 200 - 1: 1000

ELISA: 1: 20000

Not yet tested in other applications.

### Images



Immunofluorescence analysis of A549 cells, using LY6E Antibody. The picture on the right is blocked with the synthesized peptide.

### Storage

-20°C for one year

501 Changsheng S Rd, Nanhu Dist, Jiaxing, Zhejiang, China

Tel: 86 21 31007137 | E-mail: [save@bt-laboratory.com](mailto:save@bt-laboratory.com) | [www.bt-laboratory.com](http://www.bt-laboratory.com)