

TSC-22 Polyclonal Antibody

Description

Product type	Primary Antibody
Code	BT-AP09257
Host	Rabbit
Isotype	IgG
Size	20ul, 50ul, 100ul
Immunogen	The antiserum was produced against synthesized peptide derived from human TSC22D1. AA range:71-120
Mol wt	109659/15680/59863
Species reactivity	Human, Mouse, Rat
Clonality	Polyclonal
Recommended application	WB, IHC-p, IF, ELISA
Concentration	1 mg/ml
Full name	TSC-22 Antibody
Synonyms	TSC22D1; KIAA1994; TGFB114; TSC22; hucep-2; TSC22 domain family protein 1; Cerebral protein 2; Regulatory protein TSC-22; TGFB-stimulated clone 22 homolog; Transforming growth factor beta-1-induced tr

This product is for research use only, not for use in human, therapeutic or diagnostic procedure.

Background

TSC22D1 (TSC22 domain family member 1) encodes a member of the TSC22 domain family of leucine zipper transcription factors. The encoded protein is stimulated by transforming growth factor beta, and regulates the transcription of multiple genes including C-type natriuretic peptide. The encoded protein may play a critical role in tumor suppression through the induction of cancer cell apoptosis, and a single nucleotide polymorphism in the promoter of TSC22D1 has been associated with diabetic nephropathy. Alternatively spliced transcript variants encoding multiple isoforms have been observed for TSC22D1.

Recommended Dilution

WB: 1: 500 - 1: 2000

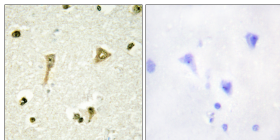
IHC: 1: 100 - 1: 300

IF: 1: 200 - 1: 1000

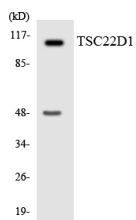
ELISA: 1: 20000

Not yet tested in other applications.

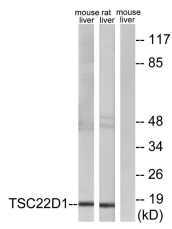
Images



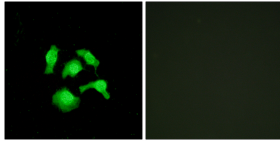
Immunohistochemistry analysis of paraffin-embedded human brain tissue, using TSC22D1 Antibody. The picture on the right is blocked with the synthesized peptide.



Western blot analysis of the lysates from HepG2 cells using TSC22D1 antibody.



Western blot analysis of lysates from mouse liver and rat liver cells, using TSC22D1 Antibody. The lane on the right is blocked with the synthesized peptide.



Immunofluorescence analysis of HepG2 cells, using TSC22D1 Antibody. The picture on the right is blocked with the synthesized peptide.

Storage

-20°C for one year

501 Changsheng S Rd, Nanhu Dist, Jiaxing, Zhejiang, China

Tel: 86 21 31007137 | E-mail: save@bt-laboratory.com | www.bt-laboratory.com