

## TSG-6 Polyclonal Antibody

### Description

<b>Product type</b>	Primary Antibody
<b>Code</b>	BT-AP09260
<b>Host</b>	Rabbit
<b>Isotype</b>	IgG
<b>Size</b>	20ul, 50ul, 100ul
<b>Immunogen</b>	The antiserum was produced against synthesized peptide derived from human TSG6. AA range:21-70
<b>Mol wt</b>	31203
<b>Species reactivity</b>	Human, Mouse
<b>Clonality</b>	Polyclonal
<b>Recommended application</b>	WB, IHC-p, IF, ELISA
<b>Concentration</b>	1 mg/ml
<b>Full name</b>	TSG-6 Antibody
<b>Synonyms</b>	TNFAIP6; TSG6; Tumor necrosis factor-inducible gene 6 protein; Hyaluronate-binding protein; TNF-stimulated gene 6 protein; TSG-6; Tumor necrosis factor alpha-induced protein 6; TNF alpha-induced prote

**This product is for research use only, not for use in human, therapeutic or diagnostic procedure.**

### Background

The protein encoded by TNFAIP6 (TNF alpha induced protein 6) is a secretory protein that contains a hyaluronan-binding domain, and thus is a member of the hyaluronan-binding protein family. The hyaluronan-binding domain is known to be involved in extracellular matrix stability and cell migration. This protein has been shown to form a stable complex with inter-alpha-inhibitor (I alpha I), and thus enhance the serine protease inhibitory activity of I alpha I, which is important in the protease network associated with inflammation. TNFAIP6 can be induced by proinflammatory cytokines such as tumor necrosis factor alpha and interleukin-1. Enhanced levels of this protein are found in the synovial fluid of patients with osteoarthritis and rheumatoid arthritis.

### Recommended Dilution

WB: 1: 500 - 1: 2000

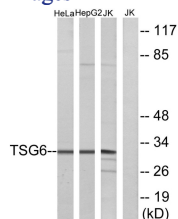
IHC: 1: 100 - 1: 300

IF: 1: 200 - 1: 1000

ELISA: 1: 5000

Not yet tested in other applications.

### Images



Western blot analysis of lysates from Jurkat, HeLa, and HepG2 cells, using TSG6 Antibody. The lane on the right is blocked with the synthesized peptide.

### Storage

-20°C for one year

