

## TSSC1 Polyclonal Antibody

### Description

<b>Product type</b>	Primary Antibody
<b>Code</b>	BT-AP09269
<b>Host</b>	Rabbit
<b>Isotype</b>	IgG
<b>Size</b>	20ul, 50ul, 100ul
<b>Immunogen</b>	The antiserum was produced against synthesized peptide derived from human TSSC1. AA range:291-340
<b>Mol wt</b>	43603
<b>Species reactivity</b>	Human, Mouse, Rat, Monkey
<b>Clonality</b>	Polyclonal
<b>Recommended application</b>	WB, ELISA
<b>Concentration</b>	1 mg/ml
<b>Full name</b>	TSSC1 Antibody
<b>Synonyms</b>	TSSC1; Protein TSSC1; Tumor-suppressing STF cDNA 1 protein; Tumor-suppressing subchromosomal transferable fragment candidate gene 1 protein

This product is for research use only, not for use in human, therapeutic or diagnostic procedure.

### Background

TSSC1 (tumor suppressing subtransferable candidate 1) has been reported in PMID 9403053 as one of several tumor-suppressing subtransferable fragments located in the imprinted gene domain of 11p15.5, an important tumor-suppressor gene region. Alterations in this region have been associated with the Beckwith-Wiedemann syndrome, Wilms tumor, rhabdomyosarcoma, adrenocortical carcinoma, and lung, ovarian, and breast cancer. Alignment of TSSC1 to genomic sequence data suggests that this gene resides on chromosome 2 rather than chromosome 11.

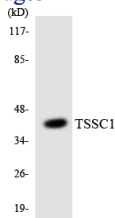
### Recommended Dilution

WB: 1: 500 - 1: 2000

ELISA: 1: 10000

Not yet tested in other applications.

### Images



Western blot analysis of the lysates from HepG2 cells using TSSC1 antibody.

### Storage

-20°C for one year