

TSSC3 Polyclonal Antibody

Description

Product type	Primary Antibody
Code	BT-AP09270
Host	Rabbit
Isotype	IgG
Size	20ul, 50ul, 100ul
Immunogen	The antiserum was produced against synthesized peptide derived from human PHLDA2. AA range:81-130
Mol wt	17092
Species reactivity	Human
Clonality	Polyclonal
Recommended application	IHC-p, ELISA
Concentration	1 mg/ml
Full name	TSSC3 Antibody
Synonyms	PHLDA2; BWR1C; HLDA2; IPL; TSSC3; Pleckstrin homology-like domain family A member 2; Beckwith-Wiedemann syndrome chromosomal region 1 candidate gene C protein; Imprinted in placenta and liver protein;

This product is for research use only, not for use in human, therapeutic or diagnostic procedure.

Background

PHLDA2 (pleckstrin homology like domain family A member 2) is located in a cluster of imprinted genes on chromosome 11p15., which is considered to be an important tumor suppressor gene region. Alterations in this region may be associated with the Beckwith-Wiedemann syndrome, Wilms tumor, rhabdomyosarcoma, adrenocortical carcinoma, and lung, ovarian, and breast cancer. PHLDA2 has been shown to be imprinted, with preferential expression from the maternal allele in placenta and liver.

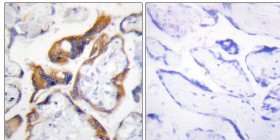
Recommended Dilution

IHC: 1: 100 - 1: 300

ELISA: 1: 20000

Not yet tested in other applications.

Images



Immunohistochemistry analysis of paraffin-embedded human placenta, using PHLA2 Antibody. The picture on the right is blocked with the synthesized peptide.

Storage

-20°C for one year