

Tuberin Polyclonal Antibody

Description

Product type	Primary Antibody
Code	BT-AP09287
Host	Rabbit
Isotype	IgG
Size	20ul, 50ul, 100ul
Immunogen	The antiserum was produced against synthesized peptide derived from human Tuberin/TSC2. AA range:905-954
Mol wt	200749
Species reactivity	Human, Mouse, Rat
Clonality	Polyclonal
Recommended application	WB, IHC-p, IF, ELISA
Concentration	1 mg/ml
Full name	Tuberin Antibody
Synonyms	TSC2; TSC4; Tuberin; Tuberous sclerosis 2 protein

This product is for research use only, not for use in human, therapeutic or diagnostic procedure.

Background

Mutations in TSC2 lead to tuberous sclerosis complex. Its gene product is believed to be a tumor suppressor and is able to stimulate specific GTPases. The protein associates with hamartin in a cytosolic complex, possibly acting as a chaperone for hamartin. Alternative splicing results in multiple transcript variants encoding different isoforms.

Recommended Dilution

WB: 1: 500 - 1: 2000

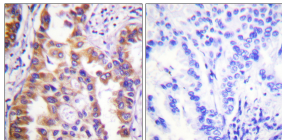
IHC: 1: 100 - 1: 300

IF: 1: 200 - 1: 1000

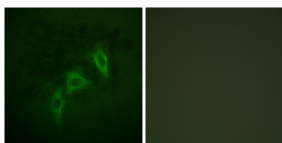
ELISA: 1: 10000

Not yet tested in other applications.

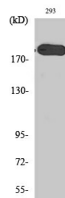
Images



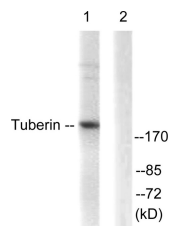
Immunohistochemistry analysis of paraffin-embedded human lung carcinoma tissue, using Tuberin/TSC2 Antibody. The picture on the right is blocked with the synthesized peptide.



Immunofluorescence analysis of HepG2 cells, using Tuberin/TSC2 Antibody. The picture on the right is blocked with the synthesized peptide.



Western Blot analysis of various cells using Tuberin Polyclonal Antibody diluted at 1:1000. Secondary antibody was diluted at 1:20000



Western blot analysis of lysates from 293 cells, treated with Anisomycin 25ug/ml 30', using Tuberin/TSC2 Antibody. The lane on the right is blocked with the synthesized peptide.

Storage

-20°C for one year

501 Changsheng S Rd, Nanhu Dist, Jiaxing, Zhejiang, China

Tel: 86 21 31007137 | E-mail: save@bt-laboratory.com | www.bt-laboratory.com