

Tubulin Alpha-3C/D/E Polyclonal Antibody

Description

Product type	Primary Antibody
Code	BT-AP09299
Host	Rabbit
Isotype	IgG
Size	20ul, 50ul, 100ul
Immunogen	The antiserum was produced against synthesized peptide derived from human TUBA3C/E. AA range:201-250
Mol wt	49960
Species reactivity	Human, Mouse, Rat
Clonality	Polyclonal
Recommended application	WB, ELISA
Concentration	1 mg/ml
Full name	Tubulin alpha-3C/D/E Antibody
Synonyms	TUBA3C; TUBA2; TUBA3D; Tubulin alpha-3C/D chain; Alpha-tubulin 2; Alpha-tubulin 3C/D; Tubulin alpha-2 chain; TUBA3E; Tubulin alpha-3E chain; Alpha-tubulin 3E

This product is for research use only, not for use in human, therapeutic or diagnostic procedure.

Background

TUBA3D encodes a member of the alpha tubulin family. Tubulin is a major component of microtubules, which are composed of alpha- and beta-tubulin heterodimers and microtubule-associated proteins in the cytoskeleton. Microtubules maintain cellular structure, function in intracellular transport, and play a role in spindle formation during mitosis.

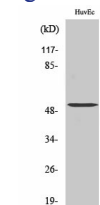
Recommended Dilution

WB: 1: 500 - 1: 2000

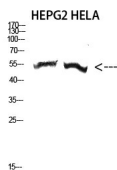
ELISA: 1: 5000

Not yet tested in other applications.

Images



Western Blot analysis of various cells using Tubulin α -3C/D/E Polyclonal Antibody diluted at 1:2000. Secondary antibody was diluted at 1:20000



Western Blot analysis of HEPG2 HELA cells using Antibody diluted at 2000. Secondary antibody was diluted at 1:20000

Storage

-20°C for one year

501 Changsheng S Rd, Nanhu Dist, Jiaxing, Zhejiang, China

Tel: 86 21 31007137 | E-mail: save@bt-laboratory.com | www.bt-laboratory.com