

TULA Polyclonal Antibody

Description

Product type	Primary Antibody
Code	BT-AP09304
Host	Rabbit
Isotype	IgG
Size	20ul, 50ul, 100ul
Immunogen	The antiserum was produced against synthesized peptide derived from human UBASH3A. AA range:311-360
Mol wt	74123
Species reactivity	Human
Clonality	Polyclonal
Recommended application	WB, ELISA
Concentration	1 mg/ml
Full name	TULA Antibody
Synonyms	UBASH3A; STS2; Ubiquitin-associated and SH3 domain-containing protein A; Cbl-interacting protein 4; CLIP4; Suppressor of T-cell receptor signaling 2; STS-2; T-cell ubiquitin ligand 1; TULA-1

This product is for research use only, not for use in human, therapeutic or diagnostic procedure.

Background

UBASH3A (ubiquitin associated and SH3 domain containing A) encodes one of two family members belonging to the T-cell ubiquitin ligand (TULA) family. Both family members can negatively regulate T-cell signaling. This family member can facilitate growth factor withdrawal-induced apoptosis in T cells, which may occur via its interaction with AIF, an apoptosis-inducing factor. Alternative splicing of UBASH3A results in multiple transcript variants.

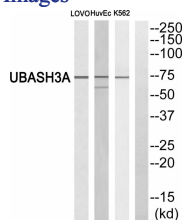
Recommended Dilution

WB: 1: 500 - 1: 2000

ELISA: 1: 5000

Not yet tested in other applications.

Images



Western blot analysis of UBASH3A Antibody. The lane on the right is blocked with the UBASH3A peptide.

Storage

-20°C for one year