

DOC2A Rabbit Polyclonal Antibody

Description

Product type	Primary Antibody
Code	BT-AP09306
Host	Rabbit
Isotype	IgG
Size	20ul, 50ul, 100ul
Immunogen	Synthesized peptide derived from human DOC2A
Mol wt	44000
Species reactivity	Human, Mouse, Rat
Clonality	Polyclonal
Recommended application	WB
Concentration	1 mg/ml
Full name	DOC2A
Synonyms	DOC2A

This product is for research use only, not for use in human, therapeutic or diagnostic procedure.

Background

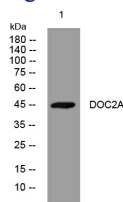
There are at least two protein isoforms of the Double C2 protein| namely alpha (DOC2A) and beta (DOC2B)| which contain two C2-like domains. DOC2A and DOC2B are encoded by different genes; these genes are at times confused with the unrelated DAB2 gene which was initially named DOC-2. DOC2A is mainly expressed in brain and is suggested to be involved in Ca(2+)-dependent neurotransmitter release. Alternative splicing results in multiple transcript variants.

Recommended Dilution

WB: 1: 500 - 1: 2000

Not yet tested in other applications.

Images



Western blot analysis of lysates from A431 cells, primary antibody was diluted at 1:1000, 4°C overnight

Storage

-20°C for 1 year