

TUTase Polyclonal Antibody

Description

Product type	Primary Antibody
Code	BT-AP09307
Host	Rabbit
Isotype	IgG
Size	20ul, 50ul, 100ul
Immunogen	The antiserum was produced against synthesized peptide derived from human TUT1. AA range:291-340
Mol wt	93847
Species reactivity	Human
Clonality	Polyclonal
Recommended application	WB, IHC-p, ELISA
Concentration	1 mg/ml
Full name	TUTase Antibody
Synonyms	TUT1; RBM21; Speckle targeted PIP5K1A-regulated poly(A) polymerase; Star-PAP; RNA-binding motif protein 21; RNA-binding protein 21; U6 snRNA-specific terminal uridylyltransferase 1; U6-TUTase

This product is for research use only, not for use in human, therapeutic or diagnostic procedure.

Background

TUT1 (terminal uridylyl transferase 1, U6 snRNA-specific) encodes a nucleotidyl transferase that functions as both a terminal uridylyltransferase and a nuclear poly (A) polymerase. The encoded enzyme specifically adds and removes nucleotides from the 3' end of small nuclear RNAs and select mRNAs and may function in controlling gene expression and cell proliferation.

Recommended Dilution

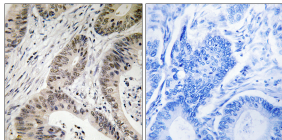
WB: 1: 500 - 1: 2000

IHC: 1: 100 - 1: 300

ELISA: 1: 20000

Not yet tested in other applications.

Images



Immunohistochemistry analysis of paraffin-embedded human colon carcinoma, using TUT1 Antibody. The picture on the right is blocked with the synthesized peptide.

Storage

-20°C for one year

501 Changsheng S Rd, Nanhu Dist, Jiaxing, Zhejiang, China

Tel: 86 21 31007137 | E-mail: save@bt-laboratory.com | www.bt-laboratory.com