

## TWEAK Polyclonal Antibody

### Description

<b>Product type</b>	Primary Antibody
<b>Code</b>	BT-AP09308
<b>Host</b>	Rabbit
<b>Isotype</b>	IgG
<b>Size</b>	20ul, 50ul, 100ul
<b>Immunogen</b>	The antiserum was produced against synthesized peptide derived from human TNFSF12. AA range:41-90
<b>Mol wt</b>	27216
<b>Species reactivity</b>	Human, Mouse
<b>Clonality</b>	Polyclonal
<b>Recommended application</b>	WB, IHC-p, IF, ELISA
<b>Concentration</b>	1 mg/ml
<b>Full name</b>	TWEAK Antibody
<b>Synonyms</b>	TNFSF12; APO3L; DR3LG; Tumor necrosis factor ligand superfamily member 12; APO3 ligand; TNF-related weak inducer of apoptosis; TWEAK

**This product is for research use only, not for use in human, therapeutic or diagnostic procedure.**

### Background

Tumor necrosis factor ligand superfamily member 12 encoded by TNFSF12 is a cytokine that belongs to the tumor necrosis factor (TNF) ligand family. This protein is a ligand for the FN14/TWEAKR receptor. This cytokine has overlapping signaling functions with TNF, but displays a much wider tissue distribution. This cytokine, which exists in both membrane-bound and secreted forms, can induce apoptosis via multiple pathways of cell death in a cell type-specific manner. This cytokine is also found to promote proliferation and migration of endothelial cells, and thus acts as a regulator of angiogenesis. Alternative splicing results in multiple transcript variants. Some transcripts skip the last exon of this gene and continue into the second exon of the neighboring TNFSF13 gene; such read-through transcripts are contained in GeneID: 407977, TNFSF12-TNFSF13.

### Recommended Dilution

WB: 1: 500 - 1: 2000

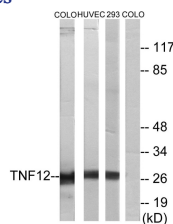
IHC: 1: 100 - 1: 300

IF: 1: 200 - 1: 1000

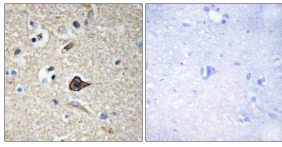
ELISA: 1: 20000

Not yet tested in other applications.

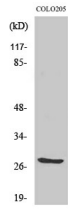
### Images



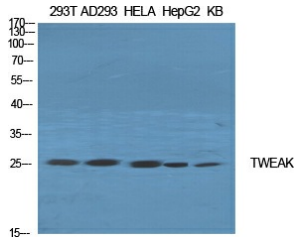
Western blot analysis of lysates from COLO205, HUVEC cells, and 293 cells, using TNF12 Antibody. The lane on the right is blocked with the synthesized peptide.



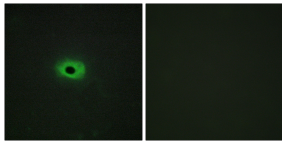
Immunohistochemistry analysis of paraffin-embedded human brain, using TNF12 Antibody. The picture on the right is blocked with the synthesized peptide.



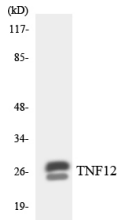
Western Blot analysis of 293 cells using TWEAK Polyclonal Antibody diluted at 1:2000. Secondary antibody was diluted at 1:20000



Western Blot analysis of various cells using TWEAK Polyclonal Antibody diluted at 1:2000. Secondary antibody was diluted at 1:20000



Immunofluorescence analysis of HeLa cells, using TNF12 Antibody. The picture on the right is blocked with the synthesized peptide.



Western blot analysis of the lysates from HeLa cells using TNF12 antibody.

### Storage

-20°C for one year

501 Changsheng S Rd, Nanhu Dist, Jiaxing, Zhejiang, China

Tel: 86 21 31007137 | E-mail: [save@bt-laboratory.com](mailto:save@bt-laboratory.com) | [www.bt-laboratory.com](http://www.bt-laboratory.com)