

## TWIK-1 Polyclonal Antibody

### Description

Product type	Primary Antibody
Code	BT-AP09309
Host	Rabbit
Isotype	IgG
Size	20ul, 50ul, 100ul
Immunogen	The antiserum was produced against synthesized peptide derived from human KCNK1. AA range:287-336
Mol wt	38143
Species reactivity	Human, Rat
Clonality	Polyclonal
Recommended application	WB, ELISA
Concentration	1 mg/ml
Full name	TWIK-1 Antibody
Synonyms	KCNK1; HOHO1; KCNO1; TWIK1; Potassium channel subfamily K member 1; Inward rectifying potassium channel protein TWIK-1; Potassium channel KCNO1

This product is for research use only, not for use in human, therapeutic or diagnostic procedure.

### Background

KCNK1 encodes one of the members of the superfamily of potassium channel proteins containing two pore-forming P domains. The product of this gene has not been shown to be a functional channel, however, it may require other non-pore-forming proteins for activity.

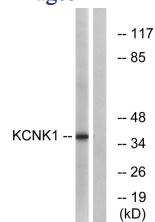
### Recommended Dilution

WB: 1: 500 - 1: 2000

ELISA: 1: 40000

Not yet tested in other applications.

### Images



Western blot analysis of lysates from Jurkat cells, using KCNK1 Antibody. The lane on the right is blocked with the synthesized peptide.

### Storage

-20°C for one year