

## TWIK-2 Polyclonal Antibody

### Description

Product type	Primary Antibody
Code	BT-AP09310
Host	Rabbit
Isotype	IgG
Size	20ul, 50ul, 100ul
Immunogen	Synthesized peptide derived from TWIK-2 . at AA range: 240-320
Mol wt	33747
Species reactivity	Human
Clonality	Polyclonal
Recommended application	WB, ELISA
Concentration	1 mg/ml
Full name	TWIK-2 Antibody
Synonyms	KCNK6; TOSS; TWIK2; Potassium channel subfamily K member 6; Inward rectifying potassium channel protein TWIK-2; TWIK-originated similarity sequence

This product is for research use only, not for use in human, therapeutic or diagnostic procedure.

### Background

KCNK6 (potassium two pore domain channel subfamily K member 6) encodes one of the members of the superfamily of potassium channel proteins containing two pore-forming P domains. This channel protein, considered an open rectifier, is widely expressed. It is stimulated by arachidonic acid, and inhibited by internal acidification and volatile anaesthetics.

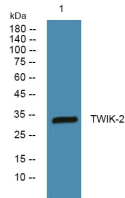
### Recommended Dilution

WB: 1: 500 - 1: 2000

ELISA: 1: 5000

Not yet tested in other applications.

### Images



Western blot analysis of lysates from DU145 cells, primary antibody was diluted at 1:1000, 4°over night

### Storage

-20°C for one year