

DOCK4 Rabbit Polyclonal Antibody

Description

Product type	Primary Antibody
Code	BT-AP09312
Host	Rabbit
Isotype	IgG
Size	20ul, 50ul, 100ul
Immunogen	Synthesized peptide derived from human DOCK4
Mol wt	216260
Species reactivity	Human, Mouse
Clonality	Polyclonal
Recommended application	WB
Concentration	1 mg/ml
Full name	DOCK4
Synonyms	DOCK4

This product is for research use only, not for use in human, therapeutic or diagnostic procedure.

Background

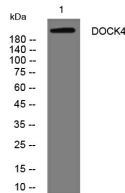
This gene is a member of the dedicator of cytokinesis (DOCK) family and encodes a protein with a DHR-1 (CZH-1) domain| a DHR-2 (CZH-2) domain and an SH3 domain. This membrane-associated| cytoplasmic protein functions as a guanine nucleotide exchange factor and is involved in regulation of adherens junctions between cells. Mutations in this gene have been associated with ovarian| prostate| glioma| and colorectal cancers. Alternatively spliced variants which encode different protein isoforms have been described| but only one has been fully characterized.

Recommended Dilution

WB: 1: 500 - 1: 2000

Not yet tested in other applications.

Images



Western blot analysis of lysates from Jarkat cells, primary antibody was diluted at 1:1000, 4°C overnight

Storage

-20°C for 1 year