

Tyk 2 Polyclonal Antibody

Description

Product type	Primary Antibody
Code	BT-AP09318
Host	Rabbit
Isotype	IgG
Size	20ul, 50ul, 100ul
Immunogen	The antiserum was produced against synthesized peptide derived from human TYK2. AA range:1020-1069
Mol wt	133650
Species reactivity	Human, Mouse, Monkey
Clonality	Polyclonal
Recommended application	WB, IHC-p, IF, ELISA
Concentration	1 mg/ml
Full name	Tyk 2 Antibody
Synonyms	TYK2; Non-receptor tyrosine-protein kinase TYK2

This product is for research use only, not for use in human, therapeutic or diagnostic procedure.

Background

TYK2 encodes a member of the tyrosine kinase and, more specifically, the Janus kinases (JAKs) protein families. Non-receptor tyrosine-protein kinase TYK2 associates with the cytoplasmic domain of type I and type II cytokine receptors and promulgate cytokine signals by phosphorylating receptor subunits. It is also component of both the type I and type III interferon signaling pathways. As such, it may play a role in anti-viral immunity. A mutation in this gene has been associated with hyperimmunoglobulin E syndrome (HIES) - a primary immunodeficiency characterized by elevated serum immunoglobulin E.

Recommended Dilution

WB: 1: 500 - 1: 2000

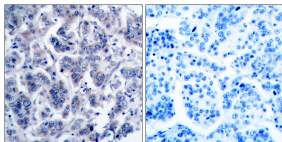
IHC: 1: 100 - 1: 300

IF: 1: 200 - 1: 1000

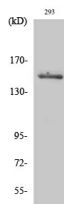
ELISA: 1: 10000

Not yet tested in other applications.

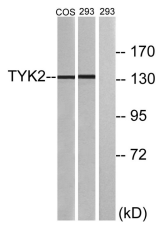
Images



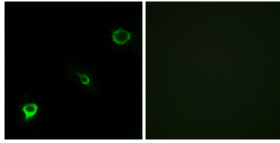
Immunohistochemistry analysis of paraffin-embedded human breast carcinoma tissue, using Tyk2 Antibody. The picture on the right is blocked with the synthesized peptide.



Western Blot analysis of various cells using Tyk 2 Polyclonal Antibody diluted at 1:2000. Secondary antibody was diluted at 1:20000



Western blot analysis of lysates from 293 and COS7 cells, treated with heat shock, using TYK2 Antibody. The lane on the right is blocked with the synthesized peptide.



Immunofluorescence analysis of COS7 cells, using TYK2 Antibody. The picture on the right is blocked with the synthesized peptide.

Storage

-20°C for one year

501 Changsheng S Rd, Nanhu Dist, Jiaxing, Zhejiang, China

Tel: 86 21 31007137 | E-mail: save@bt-laboratory.com | www.bt-laboratory.com