

TYR Polyclonal Antibody

Description

Product type	Primary Antibody
Code	BT-AP09319
Host	Rabbit
Isotype	IgG
Size	20ul, 50ul, 100ul
Immunogen	The antiserum was produced against synthesized peptide derived from human Tyrosinase. AA range:471-520
Mol wt	60393
Species reactivity	Human, Monkey
Clonality	Polyclonal
Recommended application	WB, ELISA
Concentration	1 mg/ml
Full name	TYR Antibody
Synonyms	TYR; Tyrosinase; LB24-AB; Monophenol monooxygenase; SK29-AB; Tumor rejection antigen AB

This product is for research use only, not for use in human, therapeutic or diagnostic procedure.

Background

The enzyme encoded by TYR catalyzes the first 2 steps, and at least 1 subsequent step, in the conversion of tyrosine to melanin. The enzyme has both tyrosine hydroxylase and dopa oxidase catalytic activities, and requires copper for function. Mutations in this gene result in oculocutaneous albinism, and nonpathologic polymorphisms result in skin pigmentation variation. The human genome contains a pseudogene similar to the 3' half of this gene.

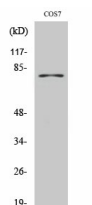
Recommended Dilution

WB: 1: 500 - 1: 2000

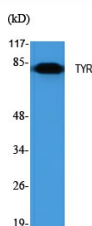
ELISA: 1: 10000

Not yet tested in other applications.

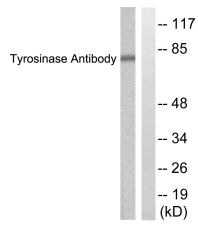
Images



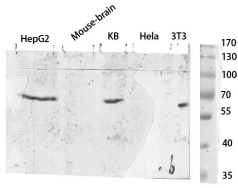
Western Blot analysis of COS7 cells using TYR Polyclonal Antibody. Secondary antibody was diluted at 1:20000



Western Blot analysis of various cells using TYR Polyclonal Antibody. Secondary antibody was diluted at 1:20000



Western blot analysis of lysates from COS7 cells, treated with UV 30', using Tyrosinase Antibody.
The lane on the right is blocked with the synthesized peptide.



Western blot analysis of various cell Lysate, antibody was diluted at 1:1000. Secondary antibody was diluted at 1:20000

Storage

-20°C for one year

501 Changsheng S Rd, Nanhui Dist, Jiading, Zhejiang, China

Tel: 86 21 31007137 | E-mail: save@bt-laboratory.com | www.bt-laboratory.com