

DONS Rabbit Polyclonal Antibody

Description

Product type	Primary Antibody
Code	BT-AP09320
Host	Rabbit
Isotype	IgG
Size	20ul, 50ul, 100ul
Immunogen	Synthesized peptide derived from human DONS
Mol wt	N/A
Species reactivity	Human, Mouse
Clonality	Polyclonal
Recommended application	WB
Concentration	1 mg/ml
Full name	DONS
Synonyms	DONS; Protein downstream neighbor of Son; B17)

This product is for research use only, not for use in human, therapeutic or diagnostic procedure.

Background

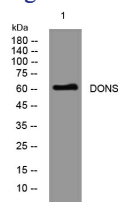
This gene lies downstream of the SON gene and spans 10 kb on chromosome 21. The function of this gene is unknown.

Recommended Dilution

WB: 1: 500 - 1: 2000

Not yet tested in other applications.

Images



Western blot analysis of lysates from HeLa cells, primary antibody was diluted at 1:1000, 4°C overnight

Storage

-20°C for 1 year

501 Changsheng S Rd, Nanhu Dist, Jiaxing, Zhejiang, China

Tel: 86 21 31007137 | E-mail: save@bt-laboratory.com | www.bt-laboratory.com