

## DPEP2 Rabbit Polyclonal Antibody

### Description

Product type	Primary Antibody
Code	BT-AP09323
Host	Rabbit
Isotype	IgG
Size	20ul, 50ul, 100ul
Immunogen	Synthesized peptide derived from human DPEP2
Mol wt	53460
Species reactivity	Human, Mouse, Rat
Clonality	Polyclonal
Recommended application	WB
Concentration	1 mg/ml
Full name	DPEP2
Synonyms	DPEP2

This product is for research use only, not for use in human, therapeutic or diagnostic procedure.

### Background

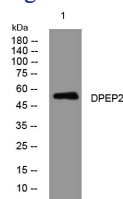
DPEP2 belongs to the membrane-bound dipeptidase (EC 3.4.13.19) family. These enzymes hydrolyze a variety of dipeptides| including leukotriene D4| the beta-lactam ring of some antibiotics| and cystinyl-bis-glycine (cys-bis-gly) formed during glutathione degradation (Habib et al.| 2003

### Recommended Dilution

WB: 1: 500 - 1: 2000

Not yet tested in other applications.

### Images



Western blot analysis of lysates from 3T3 cells, primary antibody was diluted at 1:1000, 4°C overnight

### Storage

-20°C for 1 year

501 Changsheng S Rd, Nanhu Dist, Jiaxing, Zhejiang, China

Tel: 86 21 31007137 | E-mail: [save@bt-laboratory.com](mailto:save@bt-laboratory.com) | [www.bt-laboratory.com](http://www.bt-laboratory.com)