

G3PT Polyclonal Antibody

Description

Product type	Primary Antibody
Code	BT-AP09328
Host	Rabbit
Isotype	IgG
Size	20ul, 50ul, 100ul
Immunogen	Synthesized peptide derived from part region of human protein
Mol wt	N/A
Species reactivity	Human, Rat, Mouse
Clonality	Polyclonal
Recommended application	WB, ELISA
Concentration	1 mg/ml
Full name	Glyceraldehyde-3-phosphate dehydrogenase, testis-specific
Synonyms	Glyceraldehyde-3-phosphate dehydrogenase, testis-specific ;EC 1.2.1.12;Spermatogenic cell-specific glyceraldehyde 3-phosphate dehydrogenase 2;GAPDH-2;Spermatogenic glyceraldehyde-3-phosphate deh

This product is for research use only, not for use in human, therapeutic or diagnostic procedure.

Background

This gene encodes a protein belonging to the glyceraldehyde-3-phosphate dehydrogenase family of enzymes that play an important role in carbohydrate metabolism. Like its somatic cell counterpart, this sperm-specific enzyme functions in a nicotinamide adenine dinucleotide-dependent manner to remove hydrogen and add phosphate to glyceraldehyde 3-phosphate to form 1,3-diphosphoglycerate. During spermiogenesis, this enzyme may play an important role in regulating the switch between different energy-producing pathways, and it is required for sperm motility and male fertility.

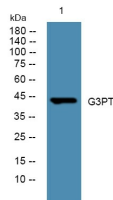
Recommended Dilution

WB: 1: 500 - 1: 2000

ELISA: 1: 5000 - 1: 20000

Not yet tested in other applications.

Images



Western blot analysis of lysates from K562 cells, primary antibody was diluted at 1:1000, 4°C overnight

Storage

-20°C for 1 year