

## Gab 1(Phospho Tyr627) Polyclonal Antibody

### Description

<b>Product type</b>	Primary Antibody
<b>Code</b>	BT-AP09332
<b>Host</b>	Rabbit
<b>Isotype</b>	IgG
<b>Size</b>	20ul, 50ul, 100ul
<b>Immunogen</b>	The antiserum was produced against synthesized peptide derived from human GAB1 around the phosphorylation site of Tyr627 AA range:611-643
<b>Mol wt</b>	76616
<b>Species reactivity</b>	Human, Mouse, Monkey
<b>Clonality</b>	Polyclonal
<b>Recommended application</b>	WB, ELISA
<b>Concentration</b>	1 mg/ml
<b>Full name</b>	GRB2-associated-binding protein 1
<b>Synonyms</b>	GRB2-associated-binding protein 1; GAB1; GRB2-associated-binding protein 1; GRB2-associated binder 1; Growth factor receptor bound protein 2-associated protein 1

**This product is for research use only, not for use in human, therapeutic or diagnostic procedure.**

### Background

The protein encoded by this gene is a member of the IRS1-like multisubstrate docking protein family. It is an important mediator of branching tubulogenesis and plays a central role in cellular growth response, transformation and apoptosis. Two transcript variants encoding different isoforms have been found for this gene.

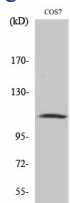
### Recommended Dilution

WB: 1: 500 - 1: 2000

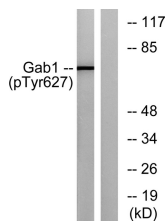
ELISA: 1: 10000

Not yet tested in other applications.

### Images



Western Blot analysis of various cells using Phospho-Gab 1 (Y627) Polyclonal Antibody



Western blot analysis of GAB1 (Phospho-Tyr627) Antibody. The lane on the right is blocked with the GAB1 (Phospho-Tyr627) peptide.

## Storage

-20°C for 1 year

501 Changsheng S Rd, Nanhu Dist, Jiaxing, Zhejiang, China

Tel: 86 21 31007137 | E-mail: [save@bt-laboratory.com](mailto:save@bt-laboratory.com) | [www.bt-laboratory.com](http://www.bt-laboratory.com)