

## GABA A Receptor alpha2 Polyclonal Antibody

### Description

<b>Product type</b>	Primary Antibody
<b>Code</b>	BT-AP09345
<b>Host</b>	Rabbit
<b>Isotype</b>	IgG
<b>Size</b>	20ul, 50ul, 100ul
<b>Immunogen</b>	Synthetic Peptide of GABA A Receptor $\alpha$ 2
<b>Mol wt</b>	N/A
<b>Species reactivity</b>	Human, Rat, Mouse
<b>Clonality</b>	Polyclonal
<b>Recommended application</b>	WB, IHC-p, IF
<b>Concentration</b>	1 mg/ml
<b>Full name</b>	Gamma-aminobutyric acid receptor subunit alpha-2
<b>Synonyms</b>	Gamma-aminobutyric acid receptor subunit alpha-2 ;GABA <sub>A</sub> receptor subunit alpha-2; Gamma-aminobutyric acid receptor subunit alpha-2; GABA <sub>A</sub> receptor subunit alpha-2

**This product is for research use only, not for use in human, therapeutic or diagnostic procedure.**

### Background

GABA is the major inhibitory neurotransmitter in the mammalian brain where it acts at GABA-A receptors, which are ligand-gated chloride channels. Chloride conductance of these channels can be modulated by agents such as benzodiazepines that bind to the GABA-A receptor. At least 16 distinct subunits of GABA-A receptors have been identified. Alternatively spliced transcript variants encoding different isoforms have been found for this gene.

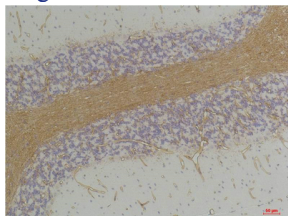
### Recommended Dilution

WB: 1: 1000 - 1: 2000

IHC: 1: 100 - 1: 200

Not yet tested in other applications.

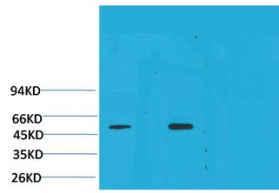
### Images



Immunohistochemical analysis of paraffin-embedded Rat Brain Tissue using GABA A Receptor  $\alpha$ 2 Rabbit pAb diluted at 1:200.

A224    GABA $\alpha$ 2R  
mouse    Rat  
brain    brain

Western blot analysis of 1) Mouse Brain Tissue, 2) Rat Brain Tissue with GABA A Receptor  $\alpha$ 2  
Rabbit pAb diluted at 1:2,000.



### Storage

-20°C for 1 year

501 Changsheng S Rd, Nanhu Dist, Jiaxing, Zhejiang, China

Tel: 86 21 31007137 | E-mail: [save@bt-laboratory.com](mailto:save@bt-laboratory.com) | [www.bt-laboratory.com](http://www.bt-laboratory.com)