

UBCE7IP4 Polyclonal Antibody

Description

Product type	Primary Antibody
Code	BT-AP09352
Host	Rabbit
Isotype	IgG
Size	20ul, 50ul, 100ul
Immunogen	The antiserum was produced against synthesized peptide derived from human RNF144A. AA range:151-200
Mol wt	32890
Species reactivity	Human, Mouse
Clonality	Polyclonal
Recommended application	WB, ELISA
Concentration	1 mg/ml
Full name	UBCE7IP4 Antibody
Synonyms	RNF144A; KIAA0161; RNF144; UBCE7IP4; Probable E3 ubiquitin-protein ligase RNF144A; RING finger protein 144A; UbcM4-interacting protein 4; Ubiquitin-conjugating enzyme 7-interacting protein 4

This product is for research use only, not for use in human, therapeutic or diagnostic procedure.

Background

Probable E3 ubiquitin-protein ligase RNF144A encoded by this protein contains a RING finger, a motif known to be involved in protein-DNA and protein-protein interactions. The mouse counterpart of this protein has been shown to interact with Ube2I3/UbcM4, which is an ubiquitin-conjugating enzyme involved in embryonic development.

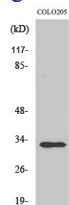
Recommended Dilution

WB: 1: 500 - 1: 2000

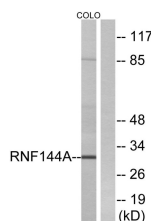
ELISA: 1: 40000

Not yet tested in other applications.

Images



Western Blot analysis of various cells using UBCE7IP4 Polyclonal Antibody. Secondary antibody was diluted at 1:20000



Western blot analysis of lysates from COLO cells, using RNF144A Antibody. The lane on the right is blocked with the synthesized peptide.

Storage

-20°C for one year

501 Changsheng S Rd, Nanhu Dist, Jiaxing, Zhejiang, China

Tel: 86 21 31007137 | E-mail: save@bt-laboratory.com | www.bt-laboratory.com