

UBE3C Polyclonal Antibody

Description

Product type	Primary Antibody
Code	BT-AP09366
Host	Rabbit
Isotype	IgG
Size	20ul, 50ul, 100ul
Immunogen	Synthesized peptide derived from the Internal region of human UBE3C.
Mol wt	123923
Species reactivity	Human
Clonality	Polyclonal
Recommended application	WB, ELISA
Concentration	1 mg/ml
Full name	UBE3C Antibody
Synonyms	UBE3C; KIAA0010; KIAA10; Ubiquitin-protein ligase E3C; HectH2

This product is for research use only, not for use in human, therapeutic or diagnostic procedure.

Background

Catalyzes the covalent attachment of ubiquitin to other proteins.

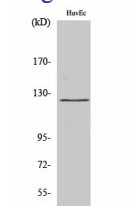
Recommended Dilution

WB: 1: 500 - 1: 2000

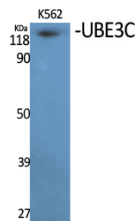
ELISA: 1: 10000

Not yet tested in other applications.

Images



Western Blot analysis of HuvEc cells using UBE3C Polyclonal Antibody. Secondary antibody was diluted at 1:20000 cells nucleus.



Western Blot analysis of various cells using UBE3C Polyclonal Antibody. Secondary antibody was diluted at 1:20000 cells nucleus.

Storage

-20°C for one year