

UBE4A Polyclonal Antibody

Description

Product type	Primary Antibody
Code	BT-AP09367
Host	Rabbit
Isotype	IgG
Size	20ul, 50ul, 100ul
Immunogen	Synthesized peptide derived from the N-terminal region of human UBE4A.
Mol wt	122561
Species reactivity	Human, Mouse, Rat
Clonality	Polyclonal
Recommended application	WB, IHC-p, ELISA
Concentration	1 mg/ml
Full name	UBE4A Antibody
Synonyms	UBE4A; KIAA0126; Ubiquitin conjugation factor E4 A

This product is for research use only, not for use in human, therapeutic or diagnostic procedure.

Background

UBE4A encodes a member of the U-box ubiquitin ligase family. The ubiquitination factor E4A is involved in multiubiquitin chain assembly and plays a critical role in chromosome condensation and separation through the polyubiquitination of securin. Autoantibodies against the encoded protein may be markers for scleroderma and Crohn's disease. A pseudogene of this gene is located on the long arm of chromosome 3. Alternatively spliced transcript variants encoding multiple isoforms have been observed for this gene.

Recommended Dilution

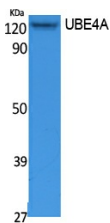
WB: 1: 500 - 1: 2000

IHC-p: 1: 100 - 300

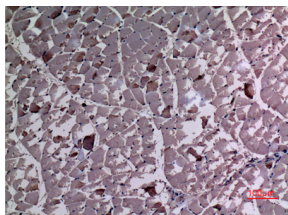
ELISA: 1: 10000

Not yet tested in other applications.

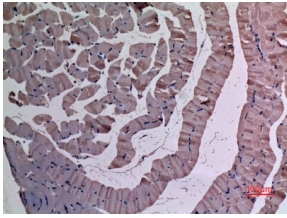
Images



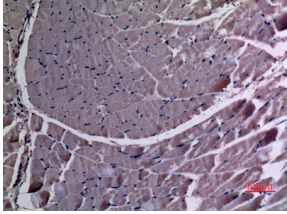
Western Blot analysis of extracts from Jurkat cells, using UBE4A Polyclonal Antibody. Secondary antibody was diluted at 1:20000



Immunohistochemical analysis of paraffin-embedded rat-muscle, antibody was diluted at 1:100



Immunohistochemical analysis of paraffin-embedded mouse-muscle, antibody was diluted at 1:100



Immunohistochemical analysis of paraffin-embedded rat-muscle, antibody was diluted at 1:100

Storage

-20°C for one year

501 Changsheng S Rd, Nanhu Dist, Jiaxing, Zhejiang, China

Tel: 86 21 31007137 | E-mail: save@bt-laboratory.com | www.bt-laboratory.com