

UBF-1 Polyclonal Antibody

Description

Product type	Primary Antibody
Code	BT-AP09369
Host	Rabbit
Isotype	IgG
Size	20ul, 50ul, 100ul
Immunogen	The antiserum was produced against synthesized peptide derived from human UBF1. AA range:501-550
Mol wt	89406
Species reactivity	Human, Mouse, Rat
Clonality	Polyclonal
Recommended application	WB, IHC-p, ELISA
Concentration	1 mg/ml
Full name	UBF-1 Antibody
Synonyms	UBTF; UBF; UBF1; Nucleolar transcription factor 1; Autoantigen NOR-90; Upstream-binding factor 1; UBF-1

This product is for research use only, not for use in human, therapeutic or diagnostic procedure.

Background

UBTF encodes a member of the HMG-box DNA-binding protein family. The nucleolar transcription factor 1 plays a critical role in ribosomal RNA transcription as a key component of the pre-initiation complex, mediating the recruitment of RNA polymerase I to rDNA promoter regions. The encoded protein may also play important roles in chromatin remodeling and pre-rRNA processing, and its activity is regulated by both phosphorylation and acetylation. Alternatively spliced transcript variants encoding multiple isoforms have been observed for this gene. Pseudogenes of this gene are located on the short arm of chromosomes 3, 11 and X and the long arm of chromosome 11.

Recommended Dilution

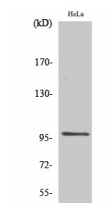
WB: 1: 500 - 1: 2000

IHC: 1: 100 - 1: 300

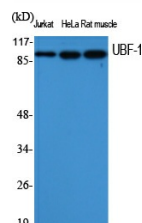
ELISA: 1: 20000

Not yet tested in other applications.

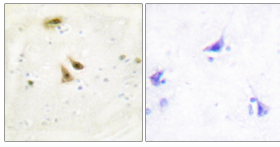
Images



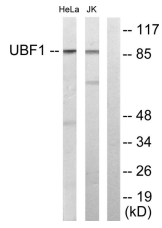
Western Blot analysis of Jurkat cells using UBF-1 Polyclonal Antibody. Secondary antibody was diluted at 1:20000 cells nucleus.



Western Blot analysis of various cells using UBF-1 Polyclonal Antibody. Secondary antibody was diluted at 1:20000 cells nucleus.



Immunohistochemistry analysis of paraffin-embedded human brain tissue, using UBF1 Antibody. The picture on the right is blocked with the synthesized peptide.



Western blot analysis of lysates from HeLa and Jurkat cells, using UBF1 Antibody. The lane on the right is blocked with the synthesized peptide.

Storage

-20°C for one year

501 Changsheng S Rd, Nanhu Dist, Jiaxing, Zhejiang, China

Tel: 86 21 31007137 | E-mail: save@bt-laboratory.com | www.bt-laboratory.com