

## DUS7 Rabbit Polyclonal Antibody

### Description

Product type	Primary Antibody
Code	BT-AP09372
Host	Rabbit
Isotype	IgG
Size	20ul, 50ul, 100ul
Immunogen	Synthesized peptide derived from human DUS7
Mol wt	46090
Species reactivity	Human, Mouse, Rat
Clonality	Polyclonal
Recommended application	WB
Concentration	1 mg/ml
Full name	DUS7
Synonyms	DUS7

This product is for research use only, not for use in human, therapeutic or diagnostic procedure.

### Background

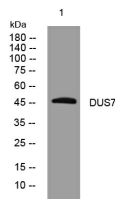
Dual-specificity phosphatases (DUSPs) constitute a large heterogeneous subgroup of the type I cysteine-based protein-tyrosine phosphatase superfamily. DUSPs are characterized by their ability to dephosphorylate both tyrosine and serine/threonine residues. DUSP7 belongs to a class of DUSPs designated MKPs that dephosphorylate MAPK (mitogen-activated protein kinase) proteins ERK (see MIM 601795) JNK (see MIM 601158) and p38 (see MIM 600289) with specificity distinct from that of individual MKP proteins. MKPs contain a highly conserved C-terminal catalytic domain and an N-terminal Cdc25 (see MIM 116947)-like (CH2) domain. MAPK activation cascades mediate various physiologic processes including cellular proliferation, apoptosis, differentiation, and stress responses (summary by Patterson et al., 2009).

### Recommended Dilution

WB: 1: 500 - 1: 2000

Not yet tested in other applications.

### Images



Western blot analysis of lysates from PC-12 cells, primary antibody was diluted at 1:1000, 4°C overnight

### Storage

-20°C for 1 year